

Product datasheet for **AP52577PU-N**

MS4A4A (N-term) Rabbit Polyclonal Antibody

Product data:

Product Type:	Primary Antibodies
Applications:	FC, WB
Recommended Dilution:	ELISA: 1/1000. Western Blot: 1/100-1/500. Flow Cytometry: 1/10-1/50.
Reactivity:	Human
Host:	Rabbit
Isotype:	Ig
Clonality:	Polyclonal
Immunogen:	KLH conjugated synthetic peptide between 40-68 amino acids from the N-terminal region of Human MS4A4A
Specificity:	This antibody recognizes Human MS4A4A (N-term).
Formulation:	PBS containing 0.09% (W/V) Sodium Azide as preservative State: Aff - Purified State: Liquid purified Ig fraction
Concentration:	lot specific
Purification:	Protein A column, followed by peptide affinity purification
Conjugation:	Unconjugated
Storage:	Store undiluted at 2-8°C for one month or (in aliquots) at -20°C for longer. Avoid repeated freezing and thawing.
Stability:	Shelf life: one year from despatch.
Gene Name:	membrane spanning 4-domains A4A
Database Link:	Entrez Gene 51338 Human Q96JQ5



[View online »](#)

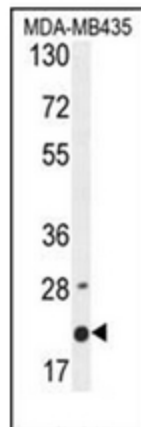
Background: This gene encodes a member of the membrane-spanning 4A gene family. Members of this nascent protein family are characterized by common structural features and similar intron/exon splice boundaries and display unique expression patterns among hematopoietic cells and nonlymphoid tissues. Alternative splicing of this gene results in several transcript variants; however, not all transcripts have been fully described.

Synonyms: 4SPAN1, CD20L1, MS4A4, HDCME31P, Four-span transmembrane protein 1

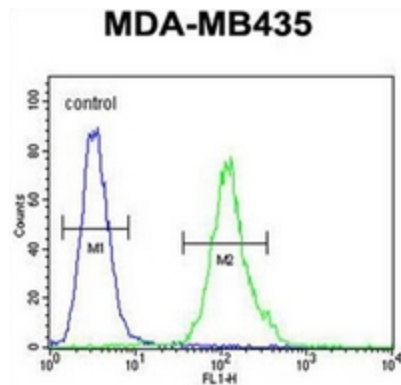
Note: **Molecular Weight:** 25441 Da

Protein Families: Druggable Genome, Transmembrane

Product images:



Western blot analysis of MS4A4A Antibody (N-term) in MDA-MB435 cell line lysates (35ug/lane). This demonstrates the M4A4A antibody detected the M4A4A protein (arrow).



Flow cytometric analysis of MDA-MB435 cells using MS4A4A Antibody (N-term) (right histogram) compared to a negative control cell (left histogram). FITC-conjugated goat-anti-rabbit secondary antibodies were used for the analysis