

## Product datasheet for **AP52576PU-N**

### **METT11D1 (METTL17) (N-term) Rabbit Polyclonal Antibody**

#### Product data:

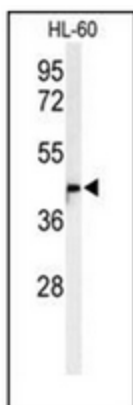
Product Type:	Primary Antibodies
Applications:	FC, IHC, WB
Recommended Dilution:	<b>ELISA:</b> 1/1000. <b>Western Blot:</b> 1/100-1/500. <b>Flow Cytometry:</b> 1/10-1/50. <b>Immunohistochemistry on Paraffin Sections:</b> 1/50-1/100.
Reactivity:	Human
Host:	Rabbit
Isotype:	Ig
Clonality:	Polyclonal
Immunogen:	KLH conjugated synthetic peptide between amino acids 90-120 from the N-terminal region of Human METT11D1
Specificity:	This antibody recognizes Human METT11D1 (N-term).
Formulation:	PBS containing 0.09% (W/V) Sodium Azide as preservative State: Aff - Purified State: Liquid purified Ig fraction
Concentration:	lot specific
Purification:	Protein A column, followed by peptide affinity purification
Conjugation:	Unconjugated
Storage:	Store undiluted at 2-8°C for one month or (in aliquots) at -20°C for longer. Avoid repeated freezing and thawing.
Stability:	Shelf life: one year from despatch.
Gene Name:	methyltransferase like 17
Database Link:	<a href="#">Entrez Gene 64745 Human Q9H7H0</a>
Background:	M11D1 may be a component of the mitochondrial small ribosomal subunit
Synonyms:	Protein RSM22 homolog, mitochondrial



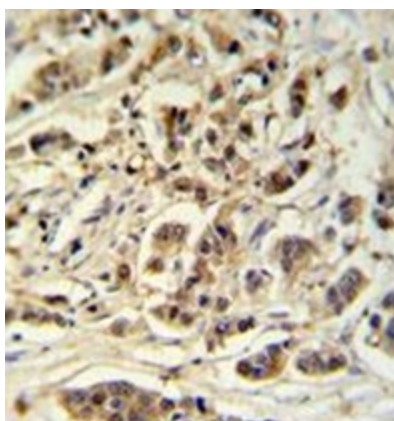
[View online »](#)

Note: **Molecular Weight:** 50734 Da

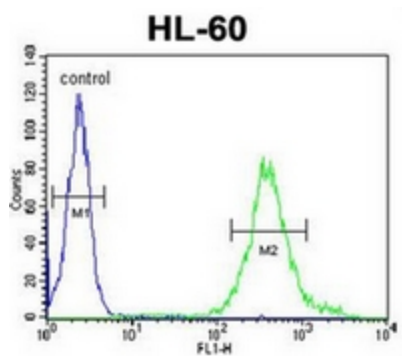
## Product images:



Western blot analysis of METT11D1 Antibody (N-term) in HL-60 cell line lysates (35ug/lane). M11D1 (arrow) was detected using the purified Pab.



Immunohistochemistry analysis in formalin fixed and paraffin embedded breast carcinoma reacted with METT11D1 Antibody (N-term), which was followed by peroxidase conjugated to the secondary antibody and followed by DAB staining.



Flow cytometric analysis of HL-60 cells using METT11D1 Antibody (N-term) (right histogram) compared to a negative control cell (left histogram). FITC-conjugated goat-anti-rabbit secondary antibodies were used for the analysis