

Product datasheet for **AP52571PU-N**

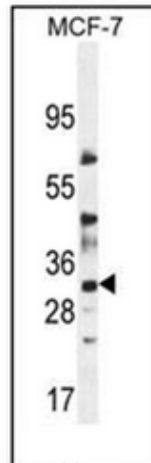
LYSMD4 (N-term) Rabbit Polyclonal Antibody

Product data:

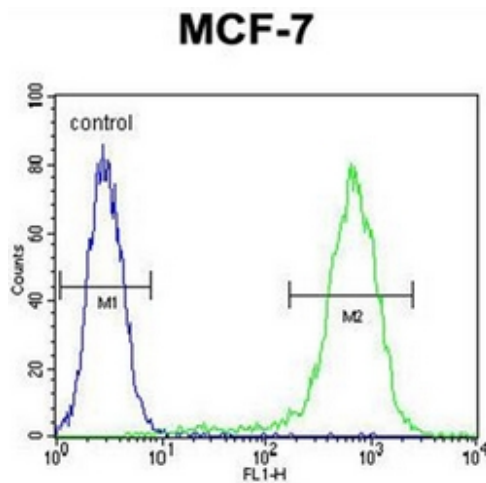
Product Type:	Primary Antibodies
Applications:	FC, WB
Recommended Dilution:	ELISA: 1/1000. Western Blot: 1/100-1/500. Flow Cytometry: 1/10-1/50.
Reactivity:	Human
Host:	Rabbit
Isotype:	Ig
Clonality:	Polyclonal
Immunogen:	KLH conjugated synthetic peptide between 40-69 amino acids from the N-terminal region of human LYSMD4
Specificity:	This antibody recognizes Human LYSMD4 (N-term).
Formulation:	PBS containing 0.09% (W/V) Sodium Azide as preservative State: Aff - Purified State: Liquid purified Ig fraction
Concentration:	lot specific
Purification:	Protein A column, followed by peptide affinity purification
Conjugation:	Unconjugated
Storage:	Store undiluted at 2-8°C for one month or (in aliquots) at -20°C for longer. Avoid repeated freezing and thawing.
Stability:	Shelf life: one year from despatch.
Gene Name:	LysM domain containing 4
Database Link:	Entrez Gene 145748 Human Q5XG99
Synonyms:	FLJ33008; MGC99501
Note:	Molecular Weight: 32066 Da
Protein Families:	Transmembrane



[View online »](#)

Product images:

Western blot analysis of LYSMD4 Antibody (N-term) in MCF-7 cell line lysates (35ug/lane). This demonstrates the LYSMD4 antibody detected the LYSMD4 protein (arrow).



Flow cytometric analysis of MCF-7 cells using LYSMD4 Antibody (N-term) (right histogram) compared to a negative control cell (left histogram). FITC-conjugated goat-anti-rabbit secondary antibodies were used for the analysis.