

Product datasheet for **AP52570PU-N**

LYRM4 (Center) Rabbit Polyclonal Antibody

Product data:

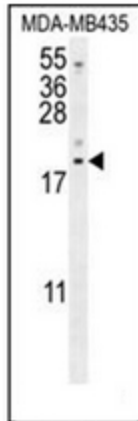
Product Type:	Primary Antibodies
Applications:	FC, IHC, WB
Recommended Dilution:	ELISA: 1/1000. Western Blot: 1/100-1/500. Flow Cytometry: 1/10-1/50. Immunohistochemistry on Paraffin Sections: 1/50-1/100.
Reactivity:	Human
Host:	Rabbit
Isotype:	Ig
Clonality:	Polyclonal
Immunogen:	KLH conjugated synthetic peptide between 46-73 amino acids from the Central region of human LYRM4
Specificity:	This antibody recognizes Human LYRM4 (Center).
Formulation:	PBS containing 0.09% (W/V) Sodium Azide as preservative State: Aff - Purified State: Liquid purified Ig fraction
Concentration:	lot specific
Purification:	Protein A column, followed by peptide affinity purification
Conjugation:	Unconjugated
Storage:	Store undiluted at 2-8°C for one month or (in aliquots) at -20°C for longer. Avoid repeated freezing and thawing.
Stability:	Shelf life: one year from despatch.
Gene Name:	LYR motif containing 4
Database Link:	Entrez Gene 57128 Human Q9HD34
Background:	Required for nuclear and mitochondrial iron-sulfur protein biosynthesis.
Synonyms:	C6orf149, ISD11



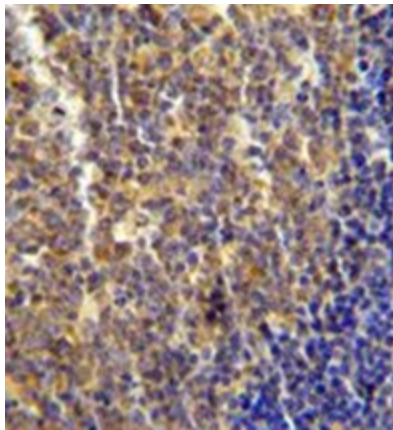
[View online »](#)

Note: **Molecular Weight:** 10758 Da

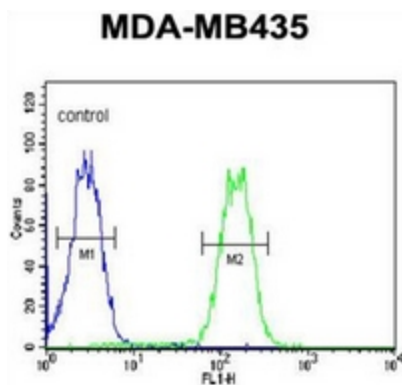
Product images:



Western blot analysis of LYRM4 Antibody (Center) in MDA-MB435 cell line lysates (35ug/lane). This demonstrates the LYRM4 antibody detected the LYRM4 protein (arrow).



Immunohistochemistry analysis in formalin fixed and paraffin embedded human tonsil tissue reacted with LYRM4 Antibody (Center), which was peroxidase conjugated to the secondary antibody and followed by DAB staining.



Flow cytometric analysis of MDA-MB435 cells using LYRM4 Antibody (Center) (right histogram) compared to a negative control cell (left histogram). FITC-conjugated goat-anti-rabbit secondary antibodies were used for the analysis.