

Product datasheet for **AP52568PU-N**

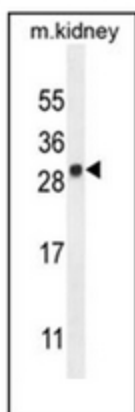
LYPD4 (Center) Rabbit Polyclonal Antibody

Product data:

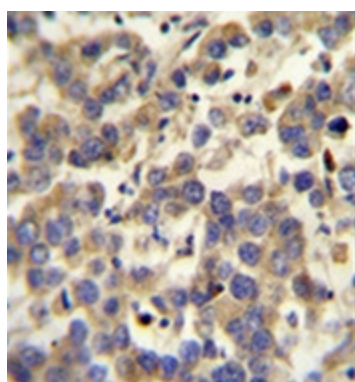
Product Type:	Primary Antibodies
Applications:	IHC, WB
Recommended Dilution:	ELISA: 1/1000. Western Blot: 1/100-1/500. Immunohistochemistry on Paraffin Sections: 1/50-1/100.
Reactivity:	Human, Mouse
Host:	Rabbit
Isotype:	Ig
Clonality:	Polyclonal
Immunogen:	KLH conjugated synthetic peptide between 111-141 amino acids from the Central region of human LYPD4
Specificity:	This antibody recognizes Human and Mouse LYPD4 (Center).
Formulation:	PBS containing 0.09% (W/V) Sodium Azide as preservative State: Aff - Purified State: Liquid purified Ig fraction
Concentration:	lot specific
Purification:	Protein A column, followed by peptide affinity purification
Conjugation:	Unconjugated
Storage:	Store undiluted at 2-8°C for one month or (in aliquots) at -20°C for longer. Avoid repeated freezing and thawing.
Stability:	Shelf life: one year from despatch.
Gene Name:	LY6/PLAUR domain containing 4
Database Link:	Entrez Gene 232973 Mouse Entrez Gene 147719 Human Q6UWN0
Synonyms:	Ly6/PLAUR domain-containing protein 4
Note:	Molecular Weight: 26763 Da



[View online »](#)

Product images:

Western blot analysis of LYPD4 Antibody (Center) in mouse kidney tissue lysates (35ug/lane). This demonstrates the LYPD4 antibody detected the LYPD4 protein (arrow).



Immunohistochemistry analysis in formalin fixed and paraffin embedded human testis carcinoma reacted with LYPD4 Antibody (Center), which was peroxidase conjugated to the secondary antibody and followed by DAB staining.