

Product datasheet for **AP52567PU-N**

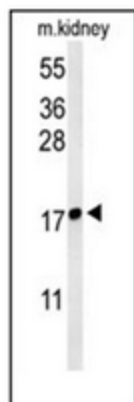
LYPD1 (C-term) Rabbit Polyclonal Antibody

Product data:

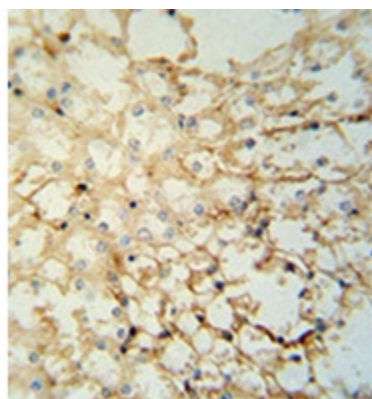
Product Type:	Primary Antibodies
Applications:	IHC, WB
Recommended Dilution:	ELISA: 1/1000. Western Blot: 1/100-1/500. Immunohistochemistry on Paraffin Sections: 1/50-1/100.
Reactivity:	Human, Mouse
Host:	Rabbit
Isotype:	Ig
Clonality:	Polyclonal
Immunogen:	KLH conjugated synthetic peptide between 100~130 amino acids from the C-terminal region of human LYPD1
Specificity:	This antibody recognizes Human and Mouse LYPD1 (C-term).
Formulation:	PBS containing 0.09% (W/V) Sodium Azide as preservative State: Aff - Purified State: Liquid purified Ig fraction
Concentration:	lot specific
Purification:	Protein A column, followed by peptide affinity purification
Conjugation:	Unconjugated
Storage:	Store undiluted at 2-8°C for one month or (in aliquots) at -20°C for longer. Avoid repeated freezing and thawing.
Stability:	Shelf life: one year from despatch.
Gene Name:	LY6/PLAUR domain containing 1
Database Link:	Entrez Gene 116372 Human Q8N2G4
Synonyms:	Ly6/PLAUR domain-containing protein 1, LYPDC1, PSEC0181
Note:	Molecular Weight: 15240 Da
Protein Families:	Druggable Genome, Transmembrane



[View online »](#)

Product images:

Western blot analysis of LYPD1 Antibody (C-term) in mouse kidney tissue lysates (35ug/lane). LYPD1 (arrow) was detected using the purified Pab.



Immunohistochemistry analysis in formalin fixed and paraffin embedded mouse kidney tissue reacted with LYPD1 Antibody (C-term), which was peroxidase conjugated to the secondary antibody and followed by DAB staining.