

Product datasheet for **AP52566PU-N**

MD1 (LY86) (C-term) Rabbit Polyclonal Antibody

Product data:

Product Type:	Primary Antibodies
Applications:	WB
Recommended Dilution:	ELISA: 1/1000. Western Blot: 1/100-1/500.
Reactivity:	Human, Mouse
Host:	Rabbit
Isotype:	Ig
Clonality:	Polyclonal
Immunogen:	KLH conjugated synthetic peptide between 97-127 amino acids from the C-terminal region of human LY86
Specificity:	This antibody recognizes Human and Mouse LY86 / MD-1 (C-term).
Formulation:	PBS containing 0.09% (W/V) Sodium Azide as preservative State: Aff - Purified State: Liquid purified Ig fraction
Concentration:	lot specific
Purification:	Protein A column, followed by peptide affinity purification
Conjugation:	Unconjugated
Storage:	Store undiluted at 2-8°C for one month or (in aliquots) at -20°C for longer. Avoid repeated freezing and thawing.
Stability:	Shelf life: one year from despatch.
Gene Name:	lymphocyte antigen 86
Database Link:	Entrez Gene 17084 Mouse Entrez Gene 9450 Human O95711
Background:	LY86 may cooperate with CD180 and TLR4 to mediate the innate immune response to bacterial lipopolysaccharide (LPS) and cytokine production. Important for efficient CD180 cell surface expression (By similarity).
Synonyms:	Lymphocyte antigen 86, MD1

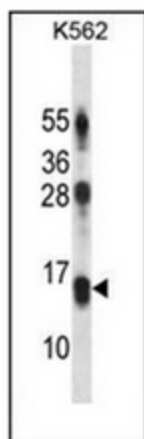


[View online »](#)

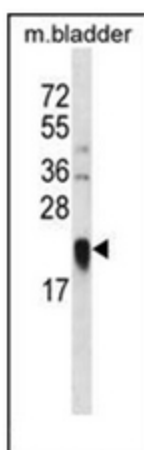
Note: **Molecular Weight:** 17906 Da

Protein Families: Secreted Protein

Product images:



Western blot analysis of LY86 / MD-1 Antibody (C-term) in K562 cell line lysates (35ug/lane). This demonstrates the LY86 antibody detected the LY86 protein (arrow).



Western blot analysis of LY86 / MD-1 Antibody (C-term) in mouse bladder tissue lysates (35ug/lane). This demonstrates the LY86 antibody detected the LY86 protein (arrow).