

## Product datasheet for **AP52565PU-N**

### LY6G6F (N-term) Rabbit Polyclonal Antibody

#### Product data:

Product Type:	Primary Antibodies
Applications:	WB
Recommended Dilution:	<b>ELISA:</b> 1/1000. <b>Western Blot:</b> 1/100-1/500.
Reactivity:	Human
Host:	Rabbit
Isotype:	Ig
Clonality:	Polyclonal
Immunogen:	KLH conjugated synthetic peptide between 55-84 amino acids from the N-terminal region of human LY6G6F / C6orf21
Specificity:	This antibody recognizes Human LY6G6F / C6orf21 (N-term).
Formulation:	PBS containing 0.09% (W/V) Sodium Azide as preservative State: Aff - Purified State: Liquid purified Ig fraction
Concentration:	lot specific
Purification:	Protein A column, followed by peptide affinity purification
Conjugation:	Unconjugated
Storage:	Store undiluted at 2-8°C for one month or (in aliquots) at -20°C for longer. Avoid repeated freezing and thawing.
Stability:	Shelf life: one year from despatch.
Gene Name:	lymphocyte antigen 6 complex, locus G6F
Database Link:	<a href="#">Entrez Gene 259215 Human Q5SQ64</a>
Background:	The human G6f protein is a type I transmembrane protein belonging to the immunoglobulin (Ig) superfamily, which is comprised of cell-surface proteins involved in the immune system and cellular recognition (de Vet et al., 2003 [PubMed 12852788]). [supplied by OMIM].
Synonyms:	G6F, LY6G6D, NG32

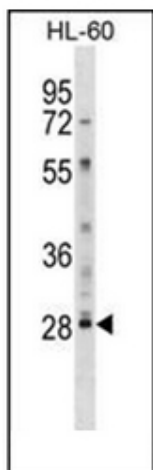


[View online »](#)

**Note:** **Molecular Weight:** 32465 Da

**Protein Families:** Transmembrane

### Product images:



Western blot analysis of LY6G6F / C6orf21 Antibody (N-term) in HL-60 cell line lysates (35ug/lane). This demonstrates the LY6G6F antibody detected the LY6G6F protein (arrow).