

## Product datasheet for **AP52564PU-N**

### **LY6G6C (C-term) Rabbit Polyclonal Antibody**

#### **Product data:**

Product Type:	Primary Antibodies
Applications:	IHC, WB
Recommended Dilution:	<b>Peptide ELISA:</b> 1/1000. <b>Western Blot:</b> 1/1000. <b>Immunohistochemistry on Paraffin Sections:</b> 1/50-1/100.
Reactivity:	Human
Host:	Rabbit
Isotype:	Ig
Clonality:	Polyclonal
Immunogen:	conjugated synthetic peptide between 62-90 amino acids from the C-terminal region of human LY6G6C
Specificity:	This antibody recognizes Human LY6G6C (C-term). Other species not tested.
Formulation:	PBS containing 0.09% (W/V) Sodium Azide as preservative State: Aff - Purified State: Liquid purified Ig fraction
Concentration:	lot specific
Purification:	Protein A column, followed by peptide affinity purification
Conjugation:	Unconjugated
Storage:	Store undiluted at 2-8°C for one month or (in aliquots) at -20°C for longer. Avoid repeated freezing and thawing.
Stability:	Shelf life: one year from despatch.
Gene Name:	lymphocyte antigen 6 complex, locus G6C
Database Link:	<a href="#">Entrez Gene 80740 Human O95867</a>



[View online »](#)

**Background:**

LY6G6C belongs to a cluster of leukocyte antigen-6 (LY6) genes located in the major histocompatibility complex (MHC) class III region on chromosome 6. Members of the LY6 superfamily typically contain 70 to 80 amino acids, including 8 to 10 cysteines. Most LY6 proteins are attached to the cell surface by a glycosylphosphatidylinositol (GPI) anchor that is directly involved in signal transduction (Mallya et al., 2002 [PubMed 12079290]).

**Synonyms:**

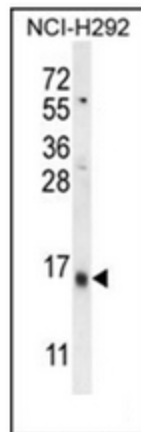
Lymphocyte antigen 6 complex locus protein G6c,C6orf24, G6C, NG24

**Note:**

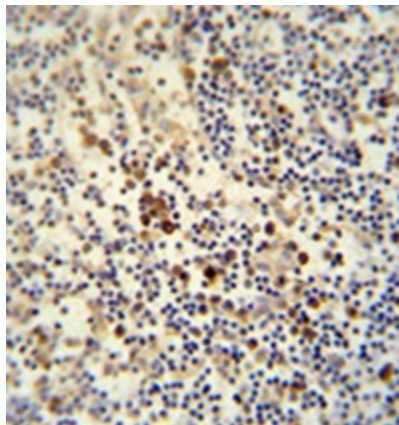
**Molecular Weight:** 13821 Da

**Protein Families:**

Secreted Protein

**Product images:**


Western blot analysis of LY6G6C Antibody (C-term) in NCI-H292 cell line lysates (35ug/lane). This demonstrates the LY6G6C antibody detected the LY6G6C protein (arrow).



Immunohistochemistry analysis in formalin fixed and paraffin embedded human lymph node reacted with LY6G6C Antibody (C-term), which was peroxidase conjugated to the secondary antibody and followed by DAB staining.