

Product datasheet for **AP52561PU-N**

LUC7L2 (C-term) Rabbit Polyclonal Antibody

Product data:

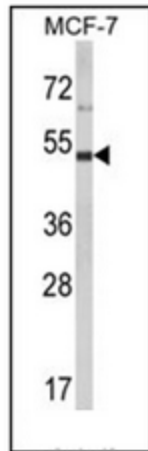
Product Type:	Primary Antibodies
Applications:	FC, IHC, WB
Recommended Dilution:	ELISA: 1/1000. Western Blot: 1/100-1/500. Flow Cytometry: 1/10-1/50. Immunohistochemistry on Paraffin Sections: 1/50-1/100.
Reactivity:	Human
Host:	Rabbit
Isotype:	Ig
Clonality:	Polyclonal
Immunogen:	KLH conjugated synthetic peptide between 348~377 amino acids from the C-terminal region of human LUC7L2
Specificity:	This antibody recognizes Human LUC7L2 (C-term).
Formulation:	PBS containing 0.09% (W/V) Sodium Azide as preservative State: Aff - Purified State: Liquid purified Ig fraction
Concentration:	lot specific
Purification:	Protein A column, followed by peptide affinity purification
Conjugation:	Unconjugated
Storage:	Store undiluted at 2-8°C for one month or (in aliquots) at -20°C for longer. Avoid repeated freezing and thawing.
Stability:	Shelf life: one year from despatch.
Gene Name:	LUC7-like 2 pre-mRNA splicing factor
Database Link:	Entrez Gene 51631 Human Q9Y383
Background:	LUC7L2 may bind to RNA via its Arg/Ser-rich domain.
Synonyms:	Luc7-like 2, CGI-59, CGI-74



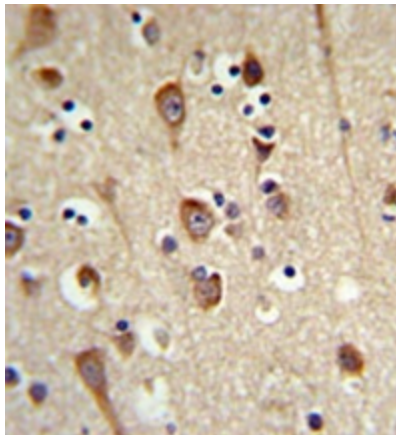
[View online »](#)

Note: **Molecular Weight:** 46514 Da

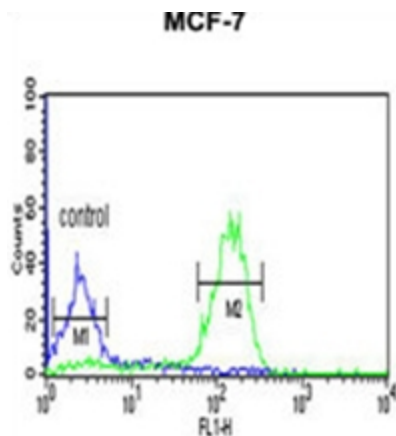
Product images:



Western blot analysis of LUC7L2 Antibody (C-term) in MCF-7 cell line lysates (35ug/lane). LUC7L2 (arrow) was detected using the purified Pab.



Immunohistochemistry analysis in formalin fixed and paraffin embedded brain tissue reacted with LUC7L2 Antibody (C-term), which was peroxidase conjugated to the secondary antibody and followed by DAB staining.



Flow cytometric analysis of MCF-7 cells using LUC7L2 Antibody (C-term) (right histogram) compared to a negative control cell (left histogram). FITC-conjugated goat-anti-rabbit secondary antibodies were used for the analysis.