

## Product datasheet for **AP52560PU-N**

### LUC7L (Center) Rabbit Polyclonal Antibody

#### Product data:

Product Type:	Primary Antibodies
Applications:	IHC, WB
Recommended Dilution:	<b>ELISA:</b> 1/1000. <b>Western Blot:</b> 1/100-1/500. <b>Immunohistochemistry on Paraffin Sections:</b> 1/10-1/50.
Reactivity:	Human
Host:	Rabbit
Isotype:	Ig
Clonality:	Polyclonal
Immunogen:	KLH conjugated synthetic peptide between 218-246 amino acids from the Central region of human LUC7L
Specificity:	This antibody recognizes Human LUC7L (Center).
Formulation:	PBS containing 0.09% (W/V) Sodium Azide as preservative State: Aff - Purified State: Liquid purified Ig fraction
Concentration:	lot specific
Purification:	Protein A column, followed by peptide affinity purification
Conjugation:	Unconjugated
Storage:	Store undiluted at 2-8°C for one month or (in aliquots) at -20°C for longer. Avoid repeated freezing and thawing.
Stability:	Shelf life: one year from despatch.
Gene Name:	LUC7 like
Database Link:	<a href="#">Entrez Gene 55692 Human Q9NQ29</a>
Background:	The LUC7L gene may represent a mammalian heterochromatic gene, encoding a putative RNA-binding protein similar to the yeast Luc7p subunit of the U1 snRNP splicing complex that is normally required for 5-prime splice site selection (Tufarelli et al., 2001 [PubMed 11170747]).

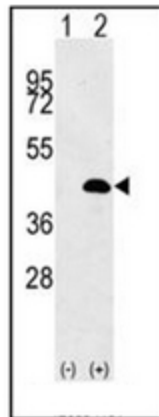


[View online »](#)

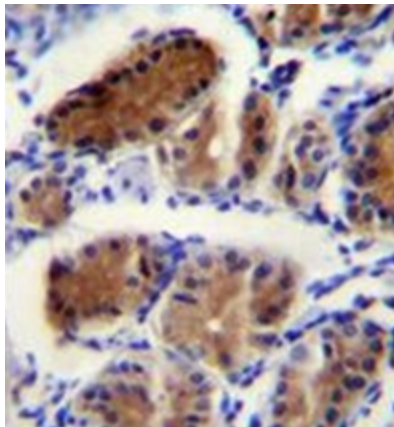
Synonyms: LUC7L1, SR+89, Luc7-like 1, LUC7B1

Note: **Molecular Weight:** 43728 Da

**Product images:**



Western blot analysis of LUC7L (arrow) using LUC7L Antibody (Center). 293 cell lysates (2 ug/lane) either nontransfected (Lane 1) or transiently transfected (Lane 2) with the LUC7L gene.



Immunohistochemistry analysis in formalin fixed and paraffin embedded human stomach tissue reacted with LUC7L Antibody (Center) followed by peroxidase conjugation of the secondary antibody and DAB staining.