

Product datasheet for **AP52559PU-N**

LTBR (N-term) Rabbit Polyclonal Antibody

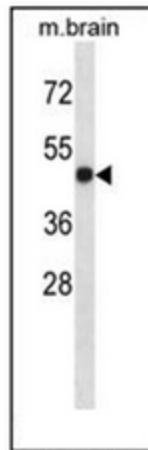
Product data:

Product Type:	Primary Antibodies
Applications:	WB
Recommended Dilution:	ELISA: 1/1000. Western Blot: 1/100-1/500.
Reactivity:	Human, Mouse
Host:	Rabbit
Isotype:	Ig
Clonality:	Polyclonal
Immunogen:	KLH conjugated synthetic peptide between 28-57 amino acids from the N-terminal region of human LTBR
Specificity:	This antibody recognizes Human and Mouse LTBR (N-term).
Formulation:	PBS containing 0.09% (W/V) Sodium Azide as preservative State: Aff - Purified State: Liquid purified Ig fraction
Concentration:	lot specific
Purification:	Protein A column, followed by peptide affinity purification
Conjugation:	Unconjugated
Storage:	Store undiluted at 2-8°C for one month or (in aliquots) at -20°C for longer. Avoid repeated freezing and thawing.
Stability:	Shelf life: one year from despatch.
Gene Name:	lymphotoxin beta receptor
Database Link:	Entrez Gene 17000 Mouse Entrez Gene 4055 Human P36941



[View online »](#)

Background:	The protein encoded by this gene is a member of the tumor necrosis factor (TNF) family of receptors. It is expressed on the surface of most cell types, including cells of epithelial and myeloid lineages, but not on T and B lymphocytes. The protein specifically binds the lymphotoxin membrane form (a complex of lymphotoxin-alpha and lymphotoxin-beta). The encoded protein and its ligand play a role in the development and organization of lymphoid tissue and transformed cells. Activation of the encoded protein can trigger apoptosis.
Synonyms:	Tumor necrosis factor receptor 3, TNF-R3, Tumor necrosis factor C receptor, TNFCR, TNFRSF3, D12S370, Lymphotoxin-beta receptor
Note:	Molecular Weight: 46709 Da
Protein Families:	Druggable Genome, Transmembrane
Protein Pathways:	Cytokine-cytokine receptor interaction

Product images:

Western blot analysis of LTBR Antibody (N-term) in mouse brain tissue lysates (35ug/lane). This demonstrates the LTBR antibody detected the LTBR protein (arrow).