

Product datasheet for **AP52558PU-N**

Leukotriene B4 Receptor 2 (LTB4R2) (C-term) Rabbit Polyclonal Antibody

Product data:

Product Type:	Primary Antibodies
Applications:	WB
Recommended Dilution:	ELISA: 1/1000. Western Blot: 1/100-1/500.
Reactivity:	Human
Host:	Rabbit
Isotype:	Ig
Clonality:	Polyclonal
Immunogen:	KLH conjugated synthetic peptide between 332-361 amino acids from the C-terminal region of human LTB4R2
Specificity:	This antibody recognizes Human LTB4R2 (C-term).
Formulation:	PBS containing 0.09% (W/V) Sodium Azide as preservative State: Aff - Purified State: Liquid purified Ig fraction
Concentration:	lot specific
Purification:	Protein A column, followed by peptide affinity purification
Conjugation:	Unconjugated
Storage:	Store undiluted at 2-8°C for one month or (in aliquots) at -20°C for longer. Avoid repeated freezing and thawing.
Stability:	Shelf life: one year from despatch.
Gene Name:	Homo sapiens leukotriene B4 receptor 2 (LTB4R2), transcript variant 2
Database Link:	Entrez Gene 56413 Human Q9NPC1
Background:	Low-affinity receptor for leukotrienes including leukotriene B4. Mediates chemotaxis of granulocytes and macrophages. The response is mediated via G-proteins that activate a phosphatidylinositol-calcium second messenger system. The rank order of affinities for the leukotrienes is LTB4 > 12-epi-LTB4 > LTB5 > LTB3
Synonyms:	Leukotriene B4 receptor 2, LTB4-R2, BLTR2, LTB4 receptor JULF2



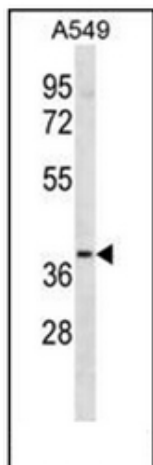
[View online »](#)

Note: **Molecular Weight:** 41525 Da

Protein Families: Druggable Genome, GPCR, Transmembrane

Protein Pathways: Calcium signaling pathway, Neuroactive ligand-receptor interaction

Product images:



Western blot analysis of LTB4R2 Antibody (C-term) in A549 cell line lysates (35ug/lane). This demonstrates the LTB4R2 antibody detected the LTB4R2 protein (arrow).