

## Product datasheet for **AP52555PU-N**

### LSM7 (C-term) Rabbit Polyclonal Antibody

#### Product data:

Product Type:	Primary Antibodies
Applications:	WB
Recommended Dilution:	<b>ELISA:</b> 1/1000. <b>Western Blot:</b> 1/100-1/500.
Reactivity:	Human, Mouse
Host:	Rabbit
Isotype:	Ig
Clonality:	Polyclonal
Immunogen:	KLH conjugated synthetic peptide between 52-80 amino acids from the C-terminal region of human LSM7
Specificity:	This antibody recognizes Human and Mouse LSM7 (C-term).
Formulation:	PBS containing 0.09% (W/V) Sodium Azide as preservative State: Aff - Purified State: Liquid purified Ig fraction
Concentration:	lot specific
Purification:	Protein A column, followed by peptide affinity purification
Conjugation:	Unconjugated
Storage:	Store undiluted at 2-8°C for one month or (in aliquots) at -20°C for longer. Avoid repeated freezing and thawing.
Stability:	Shelf life: one year from despatch.
Gene Name:	LSM7 homolog, U6 small nuclear RNA and mRNA degradation associated
Database Link:	<a href="#">Entrez Gene 51690 Human Q9UK45</a>
Background:	Sm-like proteins were identified in a variety of organisms based on sequence homology with the Sm protein family (see SNRPD2; MIM 601061). Sm-like proteins contain the Sm sequence motif, which consists of 2 regions separated by a linker of variable length that folds as a loop. The Sm-like proteins are thought to form a stable heteromer present in tri-snRNP particles, which are important for pre-mRNA splicing.



[View online »](#)

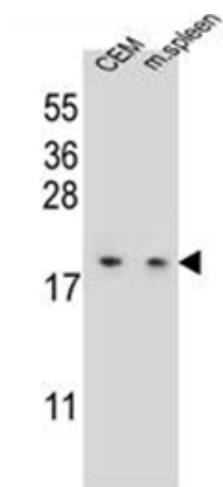
Synonyms: YNL147W

Note: **Molecular Weight:** 11602 Da

Protein Families: Stem cell - Pluripotency

Protein Pathways: RNA degradation, Spliceosome

### Product images:



Western blot analysis of LSM7 Antibody (C-term) in CEM cell line and mouse spleen tissue lysates (35ug/lane). This demonstrates the LSM7 antibody detected the LSM7 protein (arrow).