

Product datasheet for **AP52552PU-N**

LRWD1 (N-term) Rabbit Polyclonal Antibody

Product data:

Product Type:	Primary Antibodies
Applications:	IHC, WB
Recommended Dilution:	ELISA: 1/1000. Western Blot: 1/100-1/500. Immunohistochemistry on Paraffin Sections: 1/10-1/50.
Reactivity:	Human, Mouse
Host:	Rabbit
Isotype:	Ig
Clonality:	Polyclonal
Immunogen:	KLH conjugated synthetic peptide between 4-33 amino acids from the N-terminal region of human LRWD1
Specificity:	This antibody recognizes Human and Mouse LRWD1 (N-term).
Formulation:	PBS containing 0.09% (W/V) Sodium Azide as preservative State: Aff - Purified State: Liquid purified Ig fraction
Concentration:	lot specific
Purification:	Protein A column, followed by peptide affinity purification
Conjugation:	Unconjugated
Storage:	Store undiluted at 2-8°C for one month or (in aliquots) at -20°C for longer. Avoid repeated freezing and thawing.
Stability:	Shelf life: one year from despatch.
Gene Name:	leucine-rich repeats and WD repeat domain containing 1
Database Link:	Entrez Gene 71735 Mouse Entrez Gene 222229 Human Q9UFC0
Background:	LRWD1, Leucine rich repeats and WD repeat domain containing 1, contains 3 LRR (leucine-rich) repeats and 5 WD repeats.
Synonyms:	ORC-associated protein, ORCA

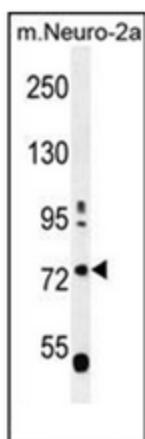


[View online »](#)

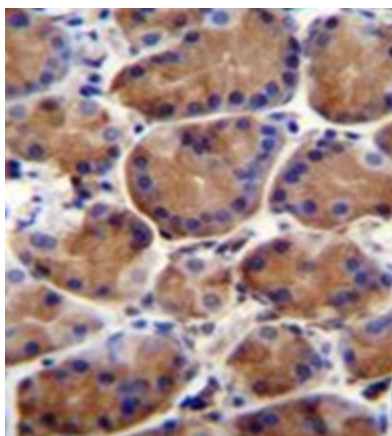
Note: **Molecular Weight:** 70861 Da

Protein Families: Druggable Genome

Product images:



Western blot analysis of LRWD1 Antibody (N-term) in mouse Neuro-2a cell line lysates (35ug/lane). This demonstrates the LRWD1 antibody detected the LRWD1 protein (arrow).



Immunohistochemistry analysis in formalin fixed and paraffin embedded human stomach tissue reacted with LRWD1 Antibody (N-term), which was peroxidase conjugated to the secondary antibody and followed by DAB staining.