

## Product datasheet for **AP52551PU-N**

### LRTM2 (C-term) Rabbit Polyclonal Antibody

#### Product data:

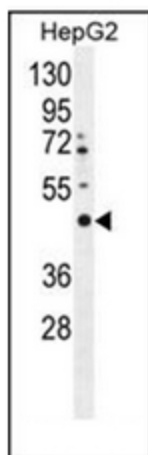
Product Type:	Primary Antibodies
Applications:	IF, IHC, WB
Recommended Dilution:	<b>ELISA:</b> 1/1000. <b>Western Blot:</b> 1/100-1/500. <b>Immunofluorescence:</b> 1/10-1/50. <b>Immunohistochemistry on Paraffin Sections:</b> 1/50-1/100.
Reactivity:	Human
Host:	Rabbit
Isotype:	Ig
Clonality:	Polyclonal
Immunogen:	KLH conjugated synthetic peptide between 346-370 amino acids from the C-terminal region of human LRTM2
Specificity:	This antibody recognizes Human LRTM2 (C-term).
Formulation:	PBS containing 0.09% (W/V) Sodium Azide as preservative State: Aff - Purified State: Liquid purified Ig fraction
Concentration:	lot specific
Purification:	Protein A column, followed by peptide affinity purification
Conjugation:	Unconjugated
Storage:	Store undiluted at 2-8°C for one month or (in aliquots) at -20°C for longer. Avoid repeated freezing and thawing.
Stability:	Shelf life: one year from despatch.
Gene Name:	leucine-rich repeats and transmembrane domains 2
Database Link:	<a href="#">Entrez Gene 654429 Human Q8N967</a>
Synonyms:	Leucine-rich repeat and transmembrane domain-containing protein 2
Note:	<b>Molecular Weight:</b> 41158 Da



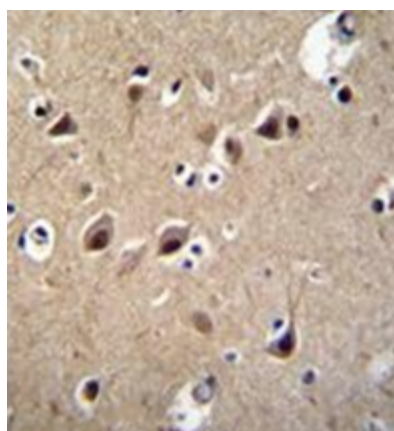
[View online »](#)

Protein Families: Transmembrane

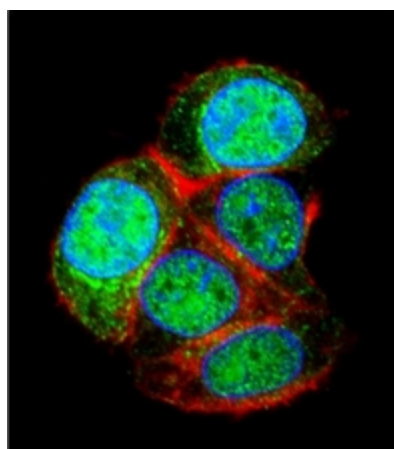
### Product images:



Western blot analysis of LRTM2 Antibody (C-term) in HepG2 cell line lysates (35ug/lane). This demonstrates the LRTM2 antibody detected the LRTM2 protein (arrow).



Immunohistochemistry analysis in formalin fixed and paraffin embedded human brain tissue reacted with LRTM2 Antibody (C-term), which was peroxidase conjugated to the secondary antibody followed by DAB staining.



Confocal immunofluorescent analysis of LRTM2 Antibody (C-term) with HepG2 cell followed by Alexa Fluor 488-conjugated goat anti-rabbit IgG (green). Actin filaments have been labeled with Alexa Fluor 555 phalloidin (red). DAPI was used to stain the cell nuclear (blue).