

## Product datasheet for **AP52550PU-N**

### LRSAM1 (N-term) Rabbit Polyclonal Antibody

#### Product data:

Product Type:	Primary Antibodies
Applications:	IHC, WB
Recommended Dilution:	<b>Western Blot:</b> 1/1000. <b>Immunohistochemistry on Paraffin Sections:</b> 1/10-1/50.
Reactivity:	Human, Mouse
Host:	Rabbit
Isotype:	Ig
Clonality:	Polyclonal
Immunogen:	KLH conjugated synthetic peptide between 1-30 amino acids from the N-terminal region of human LRSAM1
Specificity:	This antibody recognizes Human and Mouse LRSAM1 (N-term). Cellular Location: Cytoplasm. Note - Displays a punctuate distribution and localizes to a submembranal ring. Tissue Location: Highly expressed in adult spinal cord motoneurons as well as in fetal spinal cord and muscle tissue.
Formulation:	PBS containing 0.09% (W/V) Sodium Azide as preservative State: Aff - Purified State: Liquid purified Ig fraction
Concentration:	lot specific
Purification:	Protein A column, followed by peptide affinity purification
Conjugation:	Unconjugated
Storage:	Store undiluted at 2-8°C for one month or (in aliquots) at -20°C for longer. Avoid repeated freezing and thawing.
Stability:	Shelf life: one year from despatch.
Gene Name:	leucine rich repeat and sterile alpha motif containing 1
Database Link:	<a href="#">Entrez Gene 90678 Human</a> <a href="#">Q6UWEO</a>



[View online »](#)

**Background:**

LRSAM1 is a multifunctional RING finger protein that selectively regulates cell adhesion molecules, has ubiquitin ligase activity, and plays a role in receptor endocytosis and viral budding (Li et al., 2003 [PubMed 14635195]; Amit et al., 2004 [PubMed 15256501]).

**Synonyms:**

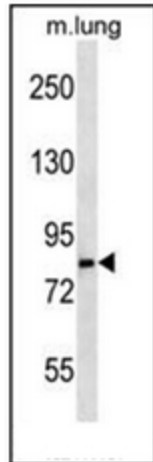
Tsg101-associated ligase, TAL

**Note:**

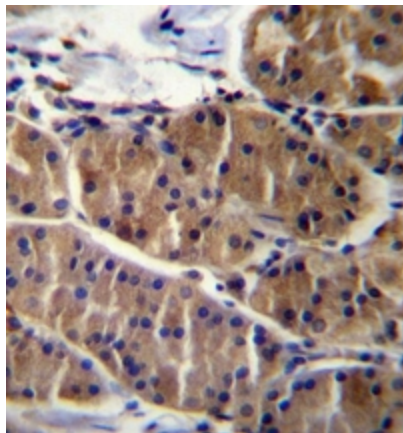
**Molecular Weight:** 83594 Da

**Protein Families:**

Druggable Genome

**Product images:**

Western blot analysis of LRSAM1 Antibody (N-term) in mouse lung tissue lysates (35ug/lane). This demonstrates the LRSAM1 antibody detected the LRSAM1 protein (arrow)



Immunohistochemistry analysis in formalin fixed and paraffin embedded human stomach tissue reacted with LRSAM1 Antibody (N-term), which was peroxidase conjugated to the secondary antibody and followed by DAB staining.