

Product datasheet for **AP52549PU-N**

LRRTM1 (Center) Rabbit Polyclonal Antibody

Product data:

Product Type:	Primary Antibodies
Applications:	IHC, WB
Recommended Dilution:	ELISA: 1/1000. Western Blot: 1/100-1/500. Immunohistochemistry on Paraffin Sections: 1/50-1/100.
Reactivity:	Human, Mouse
Host:	Rabbit
Isotype:	Ig
Clonality:	Polyclonal
Immunogen:	KLH conjugated synthetic peptide between 95~125 amino acids from the Central region of human LRRTM1
Specificity:	This antibody recognizes Human and Mouse LRRTM1 (Center).
Formulation:	PBS containing 0.09% (W/V) Sodium Azide as preservative State: Aff - Purified State: Liquid purified Ig fraction
Concentration:	lot specific
Purification:	Purified through a protein A column, followed by peptide affinity purification
Conjugation:	Unconjugated
Storage:	Store undiluted at 2-8°C for one month or (in aliquots) at -20°C for longer. Avoid repeated freezing and thawing.
Stability:	Shelf life: one year from despatch.
Gene Name:	leucine rich repeat transmembrane neuronal 1
Database Link:	Entrez Gene 74342 Mouse Entrez Gene 347730 Human Q86UE6
Background:	LRRTM1 may play a role during the development of specific forebrain structures by influencing neuronal differentiation and connectivity, with a possible role in intracellular trafficking within axons.
Synonyms:	FLJ32082; OTTHUMP00000202791; OTTHUMP00000202801; OTTHUMP00000202802

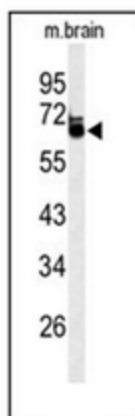


[View online »](#)

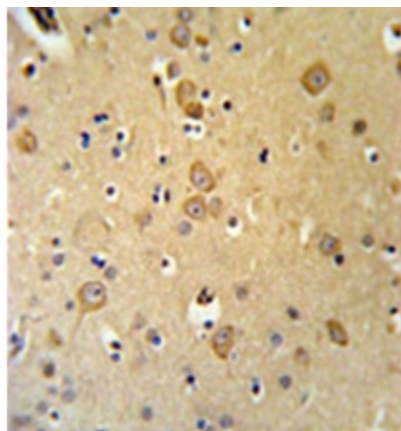
Note: **Molecular Weight:** 58641 Da

Protein Families: Transmembrane

Product images:



Western blot analysis of LRRTM1 Antibody (Center) in mouse brain tissue lysates (35ug/lane). LRRTM1 (arrow) was detected using the purified Pab.



Immunohistochemistry analysis in formalin fixed and paraffin embedded brain tissue reacted with LRRTM1 Antibody (Center), which was peroxidase conjugated to the secondary antibody and followed by DAB staining.