

Product datasheet for **AP52548PU-N**

LRRN4CL (Center) Rabbit Polyclonal Antibody

Product data:

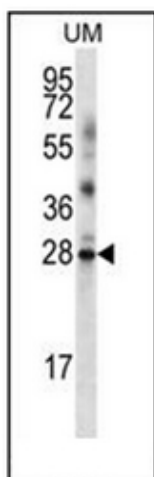
Product Type:	Primary Antibodies
Applications:	IHC, WB
Recommended Dilution:	ELISA: 1/1000. Western Blot: 1/100-1/500. Immunohistochemistry on Paraffin Sections: 1/10-1/50.
Reactivity:	Human
Host:	Rabbit
Isotype:	Ig
Clonality:	Polyclonal
Immunogen:	KLH conjugated synthetic peptide between 124-154 amino acids from the Central region of human LRRN4CL
Specificity:	This antibody recognizes Human LRRN4CL (Center).
Formulation:	PBS containing 0.09% (W/V) Sodium Azide as preservative State: Aff - Purified State: Liquid purified Ig fraction
Concentration:	lot specific
Purification:	Protein A column, followed by peptide affinity purification
Conjugation:	Unconjugated
Storage:	Store undiluted at 2-8°C for one month or (in aliquots) at -20°C for longer. Avoid repeated freezing and thawing.
Stability:	Shelf life: one year from despatch.
Gene Name:	LRRN4 C-terminal like
Database Link:	Entrez Gene 221091 Human Q8ND94
Background:	LRRN4CL contains one fibronectin type-III domain.
Synonyms:	LRRN4 C-terminal-like protein
Note:	Molecular Weight: 25262 Da



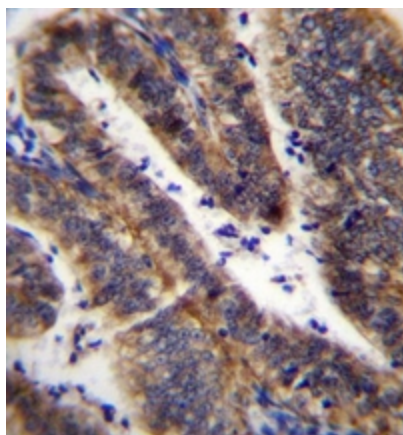
[View online »](#)

Protein Families: Transmembrane

Product images:



Western blot analysis of LRRN4CL Antibody (Center) in UM cell line lysates (35ug/lane). This demonstrates the LRRN4CL antibody detected the LRRN4CL protein (arrow).



Immunohistochemistry analysis in formalin fixed and paraffin embedded human uterus tissue reacted with LRRN4CL Antibody (Center), which was peroxidase conjugated to the secondary antibody and followed by DAB staining.