

Product datasheet for **AP52547PU-N**

LRRN3 (C-term) Rabbit Polyclonal Antibody

Product data:

Product Type:	Primary Antibodies
Applications:	WB
Recommended Dilution:	ELISA: 1/1000. Western Blot: 1/100-1/500.
Reactivity:	Human
Host:	Rabbit
Isotype:	Ig
Clonality:	Polyclonal
Immunogen:	KLH conjugated synthetic peptide between 603-631 amino acids from the C-terminal region of human LRRN3
Specificity:	This antibody recognizes Human LRRN3 (C-term).
Formulation:	PBS containing 0.09% (W/V) Sodium Azide as preservative State: Aff - Purified State: Liquid purified Ig fraction
Concentration:	lot specific
Purification:	Protein A column, followed by peptide affinity purification
Conjugation:	Unconjugated
Storage:	Store undiluted at 2-8°C for one month or (in aliquots) at -20°C for longer. Avoid repeated freezing and thawing.
Stability:	Shelf life: one year from despatch.
Gene Name:	leucine rich repeat neuronal 3
Database Link:	Entrez Gene 54674 Human Q9H3W5
Background:	LRRN3 is a single pass type I membrane protein. It contains 1 fibronectin type III domain, 1 Ig like C2 type (immunoglobulin like) domain and 12 LRR (leucine rich) repeats. The function of the LRRN3 protein remains unknown.
Synonyms:	Nbla10363

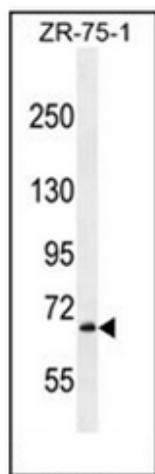


[View online »](#)

Note: **Molecular Weight:** 79424 Da

Protein Families: Transmembrane

Product images:



Western blot analysis of LRRN3 Antibody (C-term) in ZR-75-1 cell line lysates (35ug/lane). This demonstrates the LRRN3 antibody detected the LRRN3 protein (arrow).