

## Product datasheet for **AP52546PU-N**

### LRRC68 (PPP1R37) (N-term) Rabbit Polyclonal Antibody

#### Product data:

Product Type:	Primary Antibodies
Applications:	IHC, WB
Recommended Dilution:	<b>ELISA:</b> 1/1000. <b>Western Blot:</b> 1/100-1/500. <b>Immunohistochemistry on Paraffin Sections:</b> 1/50-1/100.
Reactivity:	Human, Mouse
Host:	Rabbit
Isotype:	Ig
Clonality:	Polyclonal
Immunogen:	KLH conjugated synthetic peptide between 43-71 amino acids from the N-terminal region of human LRRC68
Specificity:	This antibody recognizes Human and Mouse LRRC68 (N-term).
Formulation:	PBS containing 0.09% (W/V) Sodium Azide as preservative State: Aff - Purified State: Liquid purified Ig fraction
Concentration:	lot specific
Purification:	Protein A column, followed by peptide affinity purification
Conjugation:	Unconjugated
Storage:	Store undiluted at 2-8°C for one month or (in aliquots) at -20°C for longer. Avoid repeated freezing and thawing.
Stability:	Shelf life: one year from despatch.
Gene Name:	protein phosphatase 1 regulatory subunit 37
Database Link:	<a href="#">Entrez Gene 284352 Human</a> <a href="#">O75864</a>



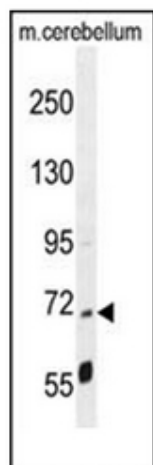
[View online »](#)

**Background:** Guanine-nucleotide-releasing protein that acts on members of the SCE4/YPT1/RAB subfamily. Stimulates GDP release from both YPT1 and RAB3A, but is less active on these proteins than on the SEC4 protein. Might play a general role in vesicular transport. Provided below are standard protocols that you may find useful for product applications.

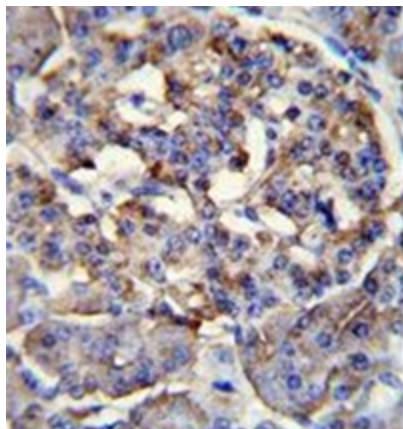
**Synonyms:** Leucine-rich repeat-containing protein 68, KIAA1986

**Note:** **Molecular Weight:** 74783 Da

**Product images:**



Western blot analysis of LRRC68 Antibody (N-term) in mouse cerebellum tissue lysates (35ug/lane). This demonstrates the LRRC68 antibody detected the LRRC68 protein (arrow).



Immunohistochemistry analysis in formalin fixed and paraffin embedded human pancreas tissue reacted with LRRC68 Antibody (N-term), which was followed peroxidase conjugated to the secondary antibody followed by DAB staining.