

## Product datasheet for **AP52543PU-N**

### **LRRC6 (Center) Rabbit Polyclonal Antibody**

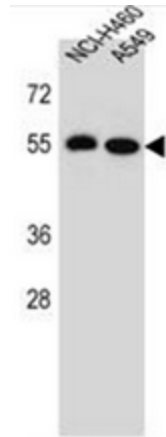
#### **Product data:**

Product Type:	Primary Antibodies
Applications:	FC, WB
Recommended Dilution:	<b>ELISA:</b> 1/1000. <b>Western Blot:</b> 1/100-1/500. <b>Flow Cytometry:</b> 1/10-1/50.
Reactivity:	Human
Host:	Rabbit
Isotype:	Ig
Clonality:	Polyclonal
Immunogen:	KLH conjugated synthetic peptide between 186-215 amino acids from the Central region of human LRRC6
Specificity:	This antibody recognizes Human LRRC6 (Center).
Formulation:	PBS containing 0.09% (W/V) Sodium Azide as preservative State: Aff - Purified State: Liquid purified Ig fraction
Concentration:	lot specific
Purification:	Protein A column, followed by peptide affinity purification
Conjugation:	Unconjugated
Storage:	Store undiluted at 2-8°C for one month or (in aliquots) at -20°C for longer. Avoid repeated freezing and thawing.
Stability:	Shelf life: one year from despatch.
Gene Name:	leucine rich repeat containing 6
Database Link:	<a href="#">Entrez Gene 23639 Human Q86X45</a>
Background:	LRRC6 may be involved in spermatocytogenesis or prophase of meiosis (By similarity).
Synonyms:	LRTP, TSLRP
Note:	<b>Molecular Weight:</b> 54255 Da

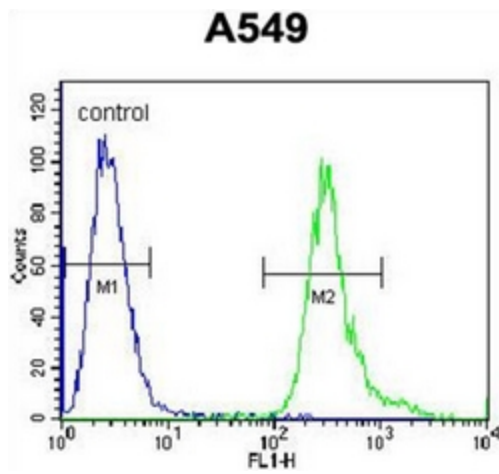


[View online »](#)

Product images:



Western blot analysis of LRRC6 Antibody (Center) in NCI-H460, A549 cell line lysates (35ug/lane). This demonstrates the LRRC6 antibody detected the LRRC6 protein (arrow).



Flow cytometric analysis of A549 cells using LRRC6 Antibody (Center) (right histogram) compared to a negative control cell (left histogram). FITC-conjugated goat-anti-rabbit secondary antibodies were used for the analysis.