

Product datasheet for **AP52542PU-N**

LRRC57 (C-term) Rabbit Polyclonal Antibody

Product data:

Product Type:	Primary Antibodies
Applications:	FC, IHC, WB
Recommended Dilution:	ELISA: 1/1000. Western Blot: 1/100-1/500. Flow Cytometry: 1/10-1/50. Immunohistochemistry on Paraffin Sections: 1/50-1/100.
Reactivity:	Human
Host:	Rabbit
Isotype:	Ig
Clonality:	Polyclonal
Immunogen:	KLH conjugated synthetic peptide between 205-235 amino acids from the C-terminal region of human LRRC57
Specificity:	This antibody recognizes Human LRRC57 (C-term).
Formulation:	PBS containing 0.09% (W/V) Sodium Azide as preservative State: Aff - Purified State: Liquid purified Ig fraction
Concentration:	lot specific
Purification:	Protein A column, followed by peptide affinity purification
Conjugation:	Unconjugated
Storage:	Store undiluted at 2-8°C for one month or (in aliquots) at -20°C for longer. Avoid repeated freezing and thawing.
Stability:	Shelf life: one year from despatch.
Gene Name:	leucine rich repeat containing 57
Database Link:	Entrez Gene 255252 Human Q8N9N7
Background:	LRRC57 contains 7 LRR (leucine rich repeats). However, the exact function remains unknown.
Synonyms:	DKFZp686H1865; FLJ36812; OTTHUMP00000161266

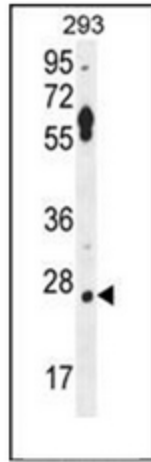


[View online »](#)

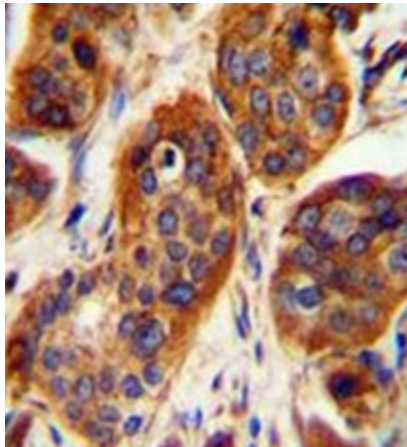
Note: **Molecular Weight:** 26754 Da

Protein Families: Druggable Genome

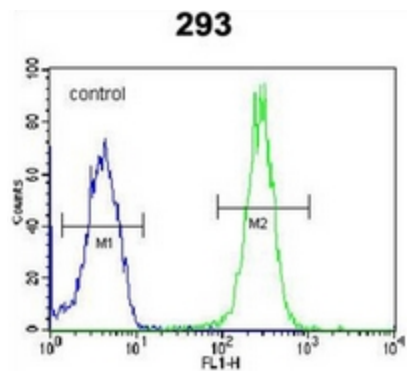
Product images:



Western blot analysis of LRRC57 Antibody (C-term) in 293 cell line lysates (35ug/lane). This demonstrates the LRRC57 antibody detected the LRRC57 protein (arrow).



Immunohistochemistry analysis in formalin fixed and paraffin embedded human bladder carcinoma reacted with LRRC57 Antibody (C-term), which was peroxidase conjugated to the secondary antibody and followed by DAB staining.



Flow cytometric analysis of 293 cells using LRRC57 Antibody (C-term) (right histogram) compared to a negative control cell (left histogram). FITC-conjugated goat-anti-rabbit secondary antibodies were used for the analysis.