

## Product datasheet for **AP52541PU-N**

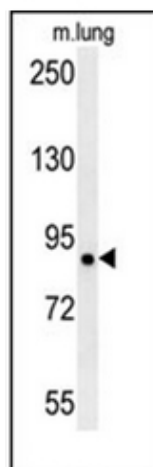
### **LRRC4B (N-term) Rabbit Polyclonal Antibody**

#### **Product data:**

Product Type:	Primary Antibodies
Applications:	WB
Recommended Dilution:	<b>ELISA:</b> 1/1000. <b>Western Blot:</b> 1/100-1/500.
Reactivity:	Human, Mouse
Host:	Rabbit
Isotype:	Ig
Clonality:	Polyclonal
Immunogen:	KLH conjugated synthetic peptide between 88-118 amino acids from the N-terminal region of human LRRC4B
Specificity:	This antibody recognizes Human and Mouse LRRC4B (N-term).
Formulation:	PBS containing 0.09% (W/V) Sodium Azide as preservative State: Aff - Purified State: Liquid purified Ig fraction
Concentration:	lot specific
Purification:	Protein A column, followed by peptide affinity purification
Conjugation:	Unconjugated
Storage:	Store undiluted at 2-8°C for one month or (in aliquots) at -20°C for longer. Avoid repeated freezing and thawing.
Stability:	Shelf life: one year from despatch.
Gene Name:	Homo sapiens leucine rich repeat containing 4B (LRRC4B)
Database Link:	<a href="#">Entrez Gene 94030 Human Q9NT99</a>
Synonyms:	LRIG4
Note:	<b>Molecular Weight:</b> 76434 Da
Protein Families:	Druggable Genome, Transmembrane



[View online »](#)

**Product images:**


Western blot analysis of LRRC4B Antibody (N-term) in mouse lung tissue lysates (15ug/lane). This demonstrates the LRRC4B antibody detected LRRC4B protein (arrow)