

## Product datasheet for **AP52539PU-N**

### **LRRC46 (N-term) Rabbit Polyclonal Antibody**

#### Product data:

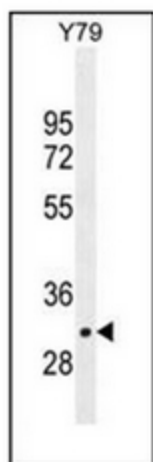
<b>Product Type:</b>	Primary Antibodies
<b>Applications:</b>	IHC, WB
<b>Recommended Dilution:</b>	<b>ELISA:</b> 1/1000. <b>Western Blot:</b> 1/100-1/500. <b>Immunohistochemistry on Paraffin Sections:</b> 1/10-1/50.
<b>Reactivity:</b>	Human
<b>Host:</b>	Rabbit
<b>Isotype:</b>	Ig
<b>Clonality:</b>	Polyclonal
<b>Immunogen:</b>	KLH conjugated synthetic peptide between 45-75 amino acids from the N-terminal region of human LRRC46
<b>Specificity:</b>	This antibody recognizes Human LRRC46 (N-term).
<b>Formulation:</b>	PBS containing 0.09% (W/V) Sodium Azide as preservative State: Aff - Purified State: Liquid purified Ig fraction
<b>Concentration:</b>	lot specific
<b>Purification:</b>	Protein A column, followed by peptide affinity purification
<b>Conjugation:</b>	Unconjugated
<b>Storage:</b>	Store undiluted at 2-8°C for one month or (in aliquots) at -20°C for longer. Avoid repeated freezing and thawing.
<b>Stability:</b>	Shelf life: one year from despatch.
<b>Gene Name:</b>	leucine rich repeat containing 46
<b>Database Link:</b>	<a href="#">Entrez Gene 90506 Human</a> <a href="#">Q96FV0</a>



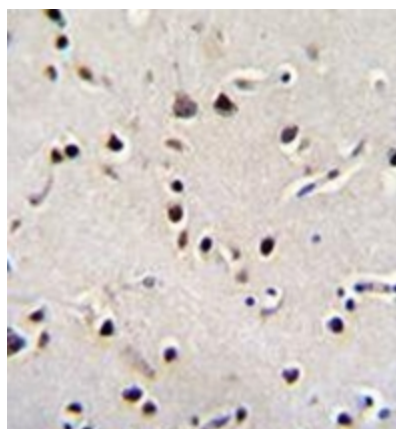
**Synonyms:** FLJ23553; MGC16309

**Note:** **Molecular Weight:** 35340 Da

**Product images:**



Western blot analysis of LRRC46 Antibody (N-term) in Y79 cell line lysates (35ug/lane). This demonstrates the LRRC46 antibody detected the LRRC46 protein (arrow).



Immunohistochemistry analysis in formalin fixed and paraffin embedded human brain tissue reacted with LRRC46 Antibody (N-term) followed by peroxidase conjugation of the secondary antibody and DAB staining.