

## Product datasheet for **AP52535PU-N**

### Netrin G2 Ligand (LRRC4) (C-term) Rabbit Polyclonal Antibody

#### Product data:

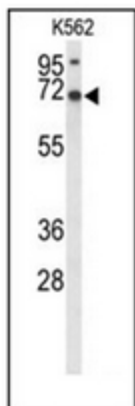
Product Type:	Primary Antibodies
Applications:	IHC, WB
Recommended Dilution:	<b>ELISA:</b> 1/1000. <b>Western Blot:</b> 1/100-1/500. <b>Immunohistochemistry on Paraffin Sections:</b> 1/50-1/100.
Reactivity:	Human
Host:	Rabbit
Isotype:	Ig
Clonality:	Polyclonal
Immunogen:	KLH conjugated synthetic peptide between 536~565 amino acids from the C-terminal region of human LRRC4
Specificity:	This antibody recognizes Human LRRC4 (C-term).
Formulation:	PBS containing 0.09% (W/V) Sodium Azide as preservative State: Aff - Purified State: Liquid purified Ig fraction
Concentration:	lot specific
Purification:	Protein A column, followed by peptide affinity purification
Conjugation:	Unconjugated
Storage:	Store undiluted at 2-8°C for one month or (in aliquots) at -20°C for longer. Avoid repeated freezing and thawing.
Stability:	Shelf life: one year from despatch.
Gene Name:	leucine rich repeat containing 4
Database Link:	<a href="#">Entrez Gene 64101 Human Q9HBW1</a>
Synonyms:	Nasopharyngeal carcinoma-associated gene 14 protein, Brain tumor-associated protein BAG, Netrin-G2 ligand, NGL-2, Leucine-rich repeat-containing protein 4, UNQ554/PRO1111, NAG14, BAG
Note:	<b>Molecular Weight:</b> 72717 Da



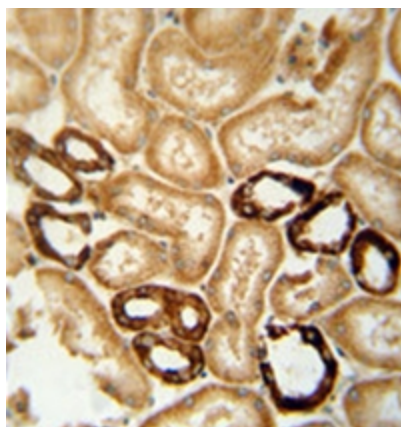
[View online »](#)

Protein Families: Druggable Genome, Transmembrane

## Product images:



Western blot analysis of LRRC4 Antibody (C-term) in K562 cell line lysates (35ug/lane). LRRC4 (arrow) was detected using the purified Pab.



Formalin-fixed and paraffin-embedded human brain tissue reacted with LRRC4 Antibody (C-term), which was peroxidase-conjugated to the secondary antibody, followed by DAB staining.