

Product datasheet for **AP52533PU-N**

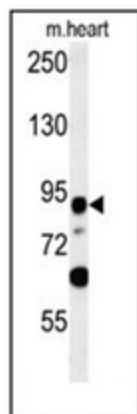
LRRC36 (N-term) Rabbit Polyclonal Antibody

Product data:

Product Type:	Primary Antibodies
Applications:	WB
Recommended Dilution:	ELISA: 1/1000. Western Blot: 1/100-1/500.
Reactivity:	Human, Mouse
Host:	Rabbit
Isotype:	Ig
Clonality:	Polyclonal
Immunogen:	KLH conjugated synthetic peptide between 95-125 amino acids from the N-terminal region of human LRRC36
Specificity:	This antibody recognizes Human and Mouse LRRC36 (N-term).
Formulation:	PBS containing 0.09% (W/V) Sodium Azide as preservative State: Aff - Purified State: Liquid purified Ig fraction
Concentration:	lot specific
Purification:	Protein A column, followed by peptide affinity purification
Conjugation:	Unconjugated
Storage:	Store undiluted at 2-8°C for one month or (in aliquots) at -20°C for longer. Avoid repeated freezing and thawing.
Stability:	Shelf life: one year from despatch.
Gene Name:	leucine rich repeat containing 36
Database Link:	Entrez Gene 270091 Mouse Entrez Gene 55282 Human Q1X8D7
Synonyms:	RORBP70, ROR gamma-binding protein 70
Note:	Molecular Weight: 83823 Da



[View online »](#)

Product images:

Western blot analysis of LRRC36 Antibody (N-term) in mouse heart tissue lysates (35ug/lane). This demonstrates the LRRC36 antibody detected the LRRC36 protein (arrow).