

Product datasheet for **AP52532PU-N**

LRRC34 (Center) Rabbit Polyclonal Antibody

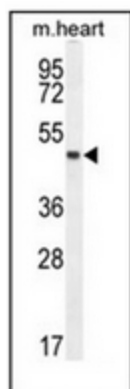
Product data:

Product Type:	Primary Antibodies
Applications:	WB
Recommended Dilution:	ELISA: 1/1000. Western Blot: 1/100-1/500.
Reactivity:	Human, Mouse
Host:	Rabbit
Isotype:	Ig
Clonality:	Polyclonal
Immunogen:	KLH conjugated synthetic peptide between 161-190 amino acids from the Central region of human LRRC34
Specificity:	This antibody recognizes Human and Mouse LRRC34 (Center).
Formulation:	PBS containing 0.09% (W/V) Sodium Azide as preservative State: Aff - Purified State: Liquid purified Ig fraction
Concentration:	lot specific
Purification:	Protein A column, followed by peptide affinity purification
Conjugation:	Unconjugated
Storage:	Store undiluted at 2-8°C for one month or (in aliquots) at -20°C for longer. Avoid repeated freezing and thawing.
Stability:	Shelf life: one year from despatch.
Gene Name:	leucine rich repeat containing 34
Database Link:	Entrez Gene 151827 Human Q8IZ02
Synonyms:	FLJ27346; MGC27085
Note:	Molecular Weight: 46384 Da



[View online »](#)

Product images:



Western blot analysis of LRRC34 Antibody (Center) in mouse heart tissue lysates (35ug/lane). This demonstrates the LRRC34 antibody detected the LRRC34 protein (arrow).