

Product datasheet for **AP52530PU-N**

LRRC28 (C-term) Rabbit Polyclonal Antibody

Product data:

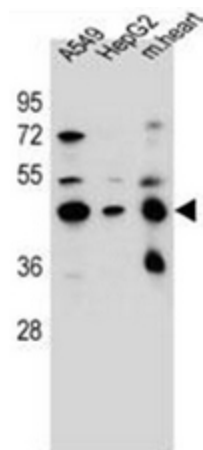
Product Type:	Primary Antibodies
Applications:	IHC, WB
Recommended Dilution:	ELISA: 1/1000. Western Blot: 1/100-1/500. Immunohistochemistry on Paraffin Sections: 1/10-1/50.
Reactivity:	Human, Mouse
Host:	Rabbit
Isotype:	Ig
Clonality:	Polyclonal
Immunogen:	KLH conjugated synthetic peptide between 313-342 amino acids from the C-terminal region of human LRRC28
Specificity:	This antibody recognizes Human and Mouse LRRC28 (C-term).
Formulation:	PBS containing 0.09% (W/V) Sodium Azide as preservative State: Aff - Purified State: Liquid purified Ig fraction
Concentration:	lot specific
Purification:	Protein A column, followed by peptide affinity purification
Conjugation:	Unconjugated
Storage:	Store undiluted at 2-8°C for one month or (in aliquots) at -20°C for longer. Avoid repeated freezing and thawing.
Stability:	Shelf life: one year from despatch.
Gene Name:	leucine rich repeat containing 28
Database Link:	Entrez Gene 67867 Mouse Entrez Gene 123355 Human Q86X40
Background:	LRRC28 contains 11 LRR (leucine-rich) repeats. The function of the LRRC28 protein is not known.
Synonyms:	FLJ34269; FLJ45242; MGC24976



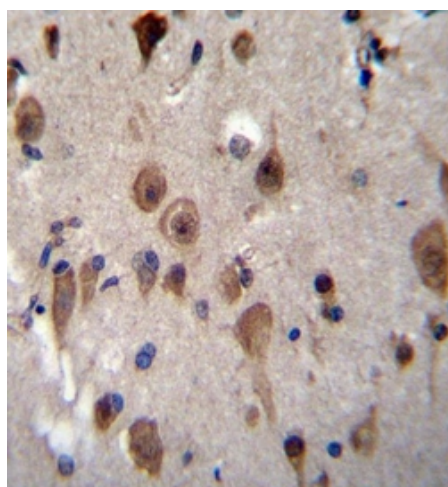
[View online »](#)

Note: **Molecular Weight:** 41912 Da

Product images:



Western blot analysis of LRRC28 Antibody (C-term) in A549, HepG2 cell line and mouse heart tissue lysates (35ug/lane). This demonstrates the LRRC28 antibody detected the LRRC28 protein (arrow).



Immunohistochemistry analysis in formalin fixed and paraffin embedded human brain tissue reacted with LRRC28 Antibody (C-term) followed by peroxidase conjugation of the secondary antibody and DAB staining.