

Product datasheet for **AP52529PU-N**

LRRC26 (C-term) Rabbit Polyclonal Antibody

Product data:

Product Type:	Primary Antibodies
Applications:	WB
Recommended Dilution:	ELISA: 1/1000. Western Blot: 1/1000.
Reactivity:	Human
Host:	Rabbit
Isotype:	Ig
Clonality:	Polyclonal
Immunogen:	KLH conjugated synthetic peptide between 289-318 amino acids from the C-terminal region of human LRRC26
Specificity:	This antibody recognizes Human LRRC26 (C-term).
Formulation:	PBS containing 0.09% (W/V) Sodium Azide as preservative State: Aff - Purified State: Liquid purified Ig fraction
Concentration:	lot specific
Purification:	Protein A column, followed by peptide affinity purification
Conjugation:	Unconjugated
Storage:	Store undiluted at 2-8°C for one month or (in aliquots) at -20°C for longer. Avoid repeated freezing and thawing.
Stability:	Shelf life: one year from despatch.
Gene Name:	leucine rich repeat containing 26
Database Link:	Entrez Gene 389816 Human Q2I0M4
Background:	Auxiliary protein of the large-conductance, voltage and calcium-activated potassium channel (BK alpha). Required for the conversion of BK alpha channels from a high-voltage to a low-voltage activated channel type in non-excitabile cells. These are characterized by negative membrane voltages and constant low levels of calcium.
Synonyms:	CAPC

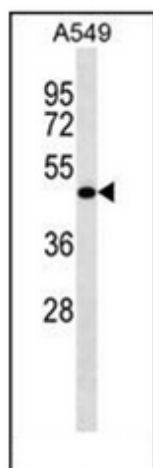


[View online »](#)

Note: **Molecular Weight:** 34857 Da

Protein Families: Transmembrane

Product images:



Western blot analysis of LRRC26 Antibody (C-term) in A549 cell line lysates (35ug/lane). This demonstrates the LRRC26 antibody detected the LRRC26 protein (arrow).