

Product datasheet for **AP52528PU-N**

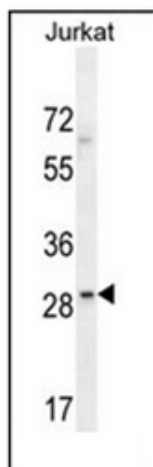
LRRC25 (C-term) Rabbit Polyclonal Antibody

Product data:

Product Type:	Primary Antibodies
Applications:	WB
Recommended Dilution:	ELISA: 1/1000. Western Blot: 1/100-1/500.
Reactivity:	Human
Host:	Rabbit
Isotype:	Ig
Clonality:	Polyclonal
Immunogen:	KLH conjugated synthetic peptide between 249-278 amino acids from the C-terminal region of human LRRC25
Specificity:	This antibody recognizes Human LRRC25 (C-term).
Formulation:	PBS containing 0.09% (W/V) Sodium Azide as preservative State: Aff - Purified State: Liquid purified Ig fraction
Concentration:	lot specific
Purification:	Protein A column, followed by peptide affinity purification
Conjugation:	Unconjugated
Storage:	Store undiluted at 2-8°C for one month or (in aliquots) at -20°C for longer. Avoid repeated freezing and thawing.
Stability:	Shelf life: one year from despatch.
Gene Name:	leucine rich repeat containing 25
Database Link:	Entrez Gene 126364 Human Q8N386
Background:	May be involved in the activation of cells of innate and acquired immunity.
Synonyms:	MAPA
Note:	Molecular Weight: 33179 Da
Protein Families:	Transmembrane



[View online »](#)

Product images:

Western blot analysis of LRRC25 Antibody (C-term) in Jurkat cell line lysates (35ug/lane). This demonstrates the LRRC25 antibody detected the LRRC25 protein (arrow).