

## Product datasheet for **AP52526PU-N**

### LRP5 (C-term) Rabbit Polyclonal Antibody

#### Product data:

|                       |  |
|-----------------------|--|
| Product Type:         | Primary Antibodies   |
| Applications:         | WB   |
| Recommended Dilution: | <b>ELISA:</b> 1/1000.<br><b>Western Blot:</b> 1/100-1/500.   |
| Reactivity:           | Human, Mouse   |
| Host:                 | Rabbit   |
| Isotype:              | Ig   |
| Clonality:            | Polyclonal   |
| Immunogen:            | KLH conjugated synthetic peptide between 1162-1190 amino acids from the C-terminal region of Human LRP5                |
| Specificity:          | This antibody recognizes Human and Mouse LRP5 (C-term).  |
| Formulation:          | PBS containing 0.09% (W/V) Sodium Azide as preservative<br>State: Aff - Purified<br>State: Liquid purified Ig fraction |
| Concentration:        | lot specific   |
| Purification:         | Protein A column, followed by peptide affinity purification  |
| Conjugation:          | Unconjugated   |
| Storage:              | Store undiluted at 2-8°C for one month or (in aliquots) at -20°C for longer.<br>Avoid repeated freezing and thawing.   |
| Stability:            | Shelf life: one year from despatch.  |
| Gene Name:            | LDL receptor related protein 5   |
| Database Link:        | <a href="#">Entrez Gene 16973 Mouse</a> <a href="#">Entrez Gene 4041 Human</a><br><a href="#">O75197</a>               |



[View online »](#)

**Background:**

This gene encodes a transmembrane low-density lipoprotein receptor that binds and internalizes ligands in the process of receptor-mediated endocytosis. This protein also acts as a co-receptor with Frizzled protein family members for transducing signals by Wnt proteins and was originally cloned on the basis of its association with type 1 diabetes mellitus in humans. This protein plays a key role in skeletal homeostasis and many bone density related diseases are caused by mutations in this gene. Mutations in this gene also cause familial exudative vitreoretinopathy.

**Synonyms:**

LRP7, LRP-5

**Note:**

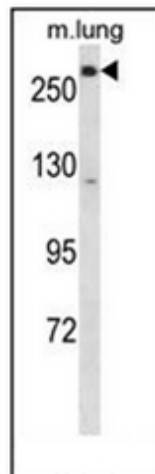
**Molecular Weight:** 179145 Da

**Protein Families:**

Druggable Genome, Transmembrane

**Protein Pathways:**

Wnt signaling pathway

**Product images:**

Western blot analysis of LRP5 Antibody (C-term) in mouse lung tissue lysates (35ug/lane). This demonstrates the LRP5 antibody detected the LRP5 protein (arrow).