

Product datasheet for **AP52524PU-N**

LRIT1 (C-term) Rabbit Polyclonal Antibody

Product data:

Product Type:	Primary Antibodies
Applications:	FC, WB
Recommended Dilution:	ELISA: 1/1000. Western Blot: 1/100-1/500. Flow Cytometry: 1/10-1/50.
Reactivity:	Human
Host:	Rabbit
Isotype:	Ig
Clonality:	Polyclonal
Immunogen:	KLH conjugated synthetic peptide between 601-623 amino acids from the C-terminal region of human LRIT1
Specificity:	This antibody recognizes Human LRIT1 (C-term).
Formulation:	PBS containing 0.09% (W/V) Sodium Azide as preservative State: Aff - Purified State: Liquid purified Ig fraction
Concentration:	lot specific
Purification:	Protein A column, followed by peptide affinity purification
Conjugation:	Unconjugated
Storage:	Store undiluted at 2-8°C for one month or (in aliquots) at -20°C for longer. Avoid repeated freezing and thawing.
Stability:	Shelf life: one year from despatch.
Gene Name:	leucine-rich repeat, Ig-like and transmembrane domains 1
Database Link:	Entrez Gene 26103 Human Q9P2V4
Background:	Possible role in phototransduction.
Synonyms:	Leucine-rich repeat, immunoglobulin-like domain and transmembrane domain-containing protein 1, LRRC21, PAL

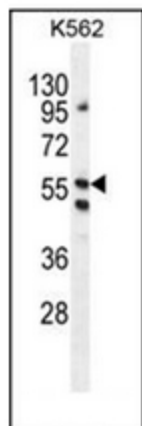


[View online »](#)

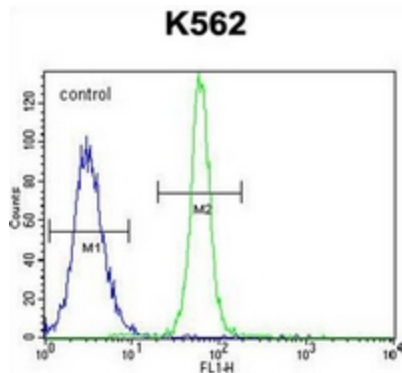
Note: **Molecular Weight:** 68041 Da

Protein Families: Transmembrane

Product images:



Western blot analysis of LRIT1 Antibody (C-term) in K562 cell line lysates (35ug/lane). This demonstrates the LRIT1 antibody detected the LRIT1 protein (arrow).



Flow cytometric analysis of K562 cells using LRIT1 Antibody (C-term) (right histogram) compared to a negative control cell (left histogram). FITC-conjugated goat-anti-rabbit secondary antibodies were used for the analysis.