

## Product datasheet for **AP52522PU-N**

### **LRRC40 (C-term) Rabbit Polyclonal Antibody**

#### **Product data:**

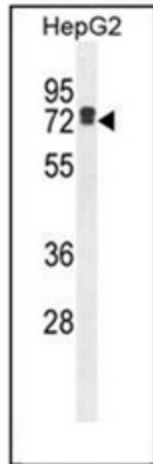
Product Type:	Primary Antibodies
Applications:	FC, IHC, WB
Recommended Dilution:	<b>ELISA:</b> 1/1000. <b>Western Blot:</b> 1/100-1/500. <b>Flow Cytometry:</b> 1/10-1/50. <b>Immunohistochemistry on Paraffin Sections:</b> 1/50-1/100.
Reactivity:	Human
Host:	Rabbit
Isotype:	Ig
Clonality:	Polyclonal
Immunogen:	KLH conjugated synthetic peptide between 343-371 amino acids from the C-terminal region of human LRRC40.
Specificity:	This antibody recognizes Human LRRC40 (C-term).
Formulation:	PBS containing 0.09% (W/V) Sodium Azide as preservative State: Aff - Purified State: Liquid purified Ig fraction
Concentration:	lot specific
Purification:	Protein A column, followed by peptide affinity purification
Conjugation:	Unconjugated
Storage:	Store undiluted at 2-8°C for one month or (in aliquots) at -20°C for longer. Avoid repeated freezing and thawing.
Stability:	Shelf life: one year from despatch.
Gene Name:	leucine rich repeat containing 40
Database Link:	<a href="#">Entrez Gene 55631 Human Q9H9A6</a>
Synonyms:	dj677H15.1; FLJ20331; RP4-677H15.1
Note:	<b>Molecular Weight:</b> 68250 Da



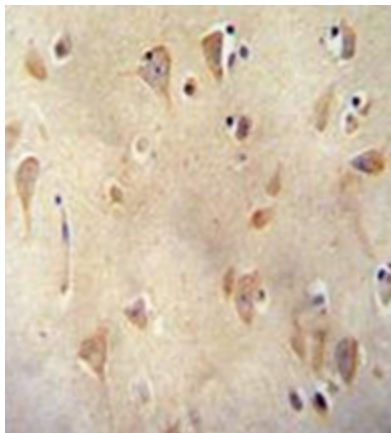
[View online »](#)

Protein Families: Druggable Genome

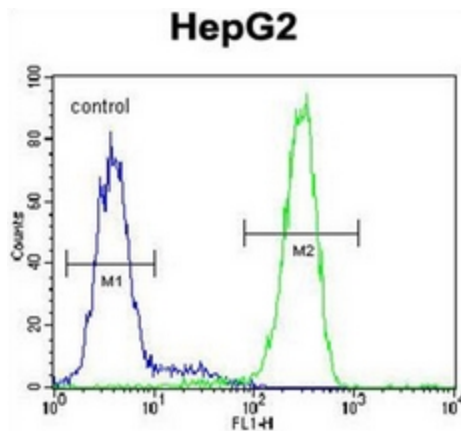
**Product images:**



Western blot analysis of LRRC40 Antibody (C-term) in HepG2 cell line lysates (35ug/lane). This demonstrates the LRRC40 antibody detected the LRRC40 protein (arrow).



Immunohistochemistry analysis in formalin fixed and paraffin embedded human brain tissue reacted with LRRC40 Antibody (C-term), which was peroxidase conjugated to the secondary antibody and followed by DAB staining.



Flow cytometric analysis of HepG2 cells using LRRC40 Antibody (C-term) (right histogram) compared to a negative control cell (left histogram). FITC-conjugated goat-anti-rabbit secondary antibodies were used for the analysis.