

Product datasheet for **AP52520PU-N**

LRRC18 (C-term) Rabbit Polyclonal Antibody

Product data:

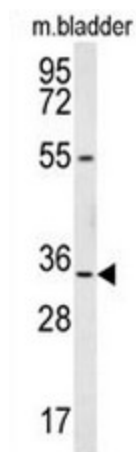
Product Type:	Primary Antibodies
Applications:	IHC, WB
Recommended Dilution:	ELISA: 1/1000. Western blot: 1/100 - 1/500. Immunohistochemistry on paraffin sections: 1/50 - 1/100.
Reactivity:	Human, Mouse
Host:	Rabbit
Isotype:	Ig
Clonality:	Polyclonal
Immunogen:	KLH conjugated synthetic peptide between 156-185 amino acids from the C-terminal region of human LRC18.
Specificity:	This antibody reacts to the C-term of LRC18.
Formulation:	PBS State: Aff - Purified State: Liquid purified Ig fraction Preservative: 0,09% sodium azide
Concentration:	lot specific
Purification:	Affinity chromatography on Protein A
Conjugation:	Unconjugated
Storage:	Store the antibody undiluted at 2-8°C for one month or (in aliquots) at -20°C for longer. Avoid repeated freezing and thawing.
Stability:	Shelf life: one year from despatch.
Predicted Protein Size:	29737 Da
Gene Name:	leucine rich repeat containing 18
Database Link:	Entrez Gene 474354 Human Q8N456
Background:	May be involved in the regulation of spermatogenesis and sperm maturation (By similarity).



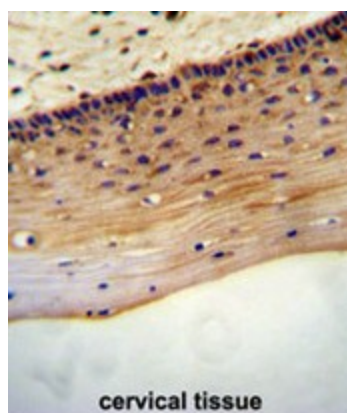
[View online »](#)

Synonyms: MGC34773; UNQ933; UNQ9338; VKGE9338

Product images:



LRR18 Antibody (C-term) western blot analysis in mouse bladder tissue lysates (35ug/lane). This demonstrates the LRR18 antibody detected the LRR18 protein (arrow).



LRR18 antibody (C-term) immunohistochemistry analysis in formalin fixed and paraffin embedded human cervical tissue followed by peroxidase conjugation of the secondary antibody and DAB staining. This data demonstrates the use of the LRR18 antibody (C-term) for immunohistochemistry. Clinical relevance has not been evaluated.