

Product datasheet for **AP52517PU-N**

P2RY5 (LPAR6) (Center) Rabbit Polyclonal Antibody

Product data:

Product Type:	Primary Antibodies
Applications:	IHC, WB
Recommended Dilution:	Western blot: 1/1000. Immunohistochemistry on Paraffin Sections: 1/10-1/50.
Reactivity:	Human, Mouse, Rat
Host:	Rabbit
Isotype:	Ig
Clonality:	Polyclonal
Immunogen:	KLH conjugated synthetic peptide between 106-134 amino acids from the Central region of Human P2RY5 / LPAR6
Specificity:	This antibody recognizes Human P2RY5 / LPAR6 (Center).
Formulation:	PBS containing 0.09% (W/V) Sodium Azide as preservative State: Aff - Purified State: Liquid purified Ig fraction
Concentration:	lot specific
Purification:	Protein A column, followed by peptide affinity purification
Conjugation:	Unconjugated
Storage:	Store undiluted at 2-8°C for one month or (in aliquots) at -20°C for longer. Avoid repeated freezing and thawing.
Stability:	Shelf life: one year from despatch.
Predicted Protein Size:	39392 Da
Gene Name:	lysophosphatidic acid receptor 6
Database Link:	Entrez Gene 67168 Mouse Entrez Gene 691774 Rat Entrez Gene 10161 Human P43657
Background:	The protein encoded by this gene belongs to the family of G-protein coupled receptors, that are preferentially activated by adenosine and uridine nucleotides. This gene aligns with an internal intron of the retinoblastoma susceptibility gene in the reverse orientation. Alternative splicing results in multiple transcript variants.



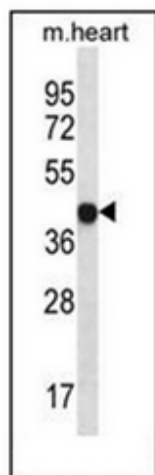
[View online »](#)

Synonyms: P2Y purinoceptor 5, P2Y5, Purinergic receptor 5, Lysophosphatidic acid receptor 6, LPA receptor 6, LPA-6

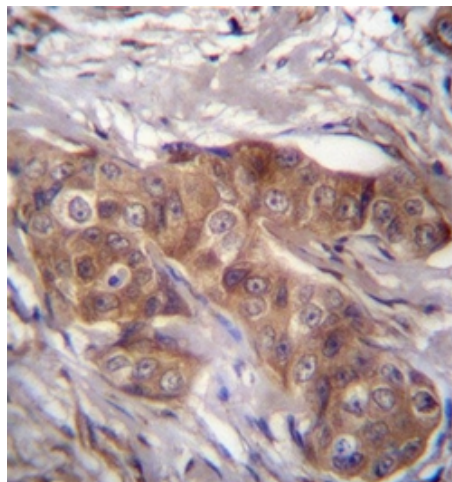
Protein Families: Druggable Genome, GPCR, Transmembrane

Protein Pathways: Neuroactive ligand-receptor interaction

Product images:



Western blot analysis in mouse heart tissue lysates (35ug/lane) using LPAR6 Antibody (Center). This demonstrates the LPAR6 antibody detected the LPAR6 protein (arrow).



Immunohistochemistry analysis in formalin fixed and paraffin embedded human breast carcinoma using LPAR6 Antibody (Center), which was peroxidase conjugated to the secondary antibody and followed by DAB staining.