

Product datasheet for **AP52516PU-N**

P2Y9 (LPAR4) (Center) Rabbit Polyclonal Antibody

Product data:

Product Type:	Primary Antibodies
Applications:	WB
Recommended Dilution:	ELISA: 1/1000. Western Blot: 1/1000.
Reactivity:	Human
Host:	Rabbit
Isotype:	Ig
Clonality:	Polyclonal
Immunogen:	KLH conjugated synthetic peptide between 127-156 amino acids from the Central region of human P2RY9 / LPAR4
Specificity:	This antibody recognizes Human P2RY9 / LPAR4 (Center).
Formulation:	PBS containing 0.09% (W/V) Sodium Azide as preservative State: Aff - Purified State: Liquid purified Ig fraction
Concentration:	lot specific
Purification:	Protein A column, followed by peptide affinity purification
Conjugation:	Unconjugated
Storage:	Store undiluted at 2-8°C for one month or (in aliquots) at -20°C for longer. Avoid repeated freezing and thawing.
Stability:	Shelf life: one year from despatch.
Gene Name:	lysophosphatidic acid receptor 4
Database Link:	Entrez Gene 2846 Human Q99677
Background:	This gene encodes a member of the lysophosphatidic acid receptor family. It may also be related to the P2Y receptors, a family of receptors that bind purine and pyrimidine nucleotides and are coupled to G proteins. The encoded protein may play a role in monocytic differentiation.



[View online »](#)

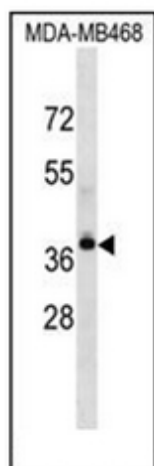
Synonyms: P2Y purinoceptor 9, P2Y9, Purinergic receptor 9, Lysophosphatidic acid receptor 4, P2Y5-like receptor, LPA receptor 4, LPA-4, LPA4, GPR23, G-protein coupled receptor 23

Note: **Molecular Weight:** 41895 Da

Protein Families: Druggable Genome, GPCR, Transmembrane

Protein Pathways: Neuroactive ligand-receptor interaction

Product images:



Western blot analysis of P2RY9 / LPAR4 Antibody (Center) in MDA-MB468 cell line lysates (35ug/lane). This demonstrates the LPAR4 antibody detected the LPAR4 protein (arrow).