

## Product datasheet for **AP52515PU-N**

### LOXL3 (C-term) Rabbit Polyclonal Antibody

#### Product data:

Product Type:	Primary Antibodies
Applications:	IHC, WB
Recommended Dilution:	<b>ELISA:</b> 1/1000. <b>Western Blot:</b> 1/1000. <b>Immunohistochemistry on Paraffin Sections:</b> 1/10-1/50.
Reactivity:	Human
Host:	Rabbit
Isotype:	Ig
Clonality:	Polyclonal
Immunogen:	KLH conjugated synthetic peptide between 715-744 amino acids from the C-terminal region of human LOXL3
Specificity:	This antibody recognizes Human LOXL3 (C-term).
Formulation:	PBS containing 0.09% (W/V) Sodium Azide as preservative State: Aff - Purified State: Liquid purified Ig fraction
Concentration:	lot specific
Purification:	Protein A column, followed by peptide affinity purification
Conjugation:	Unconjugated
Storage:	Store undiluted at 2-8°C for one month or (in aliquots) at -20°C for longer. Avoid repeated freezing and thawing.
Stability:	Shelf life: one year from despatch.
Gene Name:	lysyl oxidase like 3
Database Link:	<a href="#">Entrez Gene 84695 Human P58215</a>



[View online »](#)

**Background:**

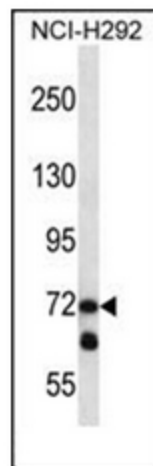
This gene encodes a member of the lysyl oxidase gene family. The prototypic member of the family is essential to the biogenesis of connective tissue, encoding an extracellular copper-dependent amine oxidase that catalyses the first step in the formation of crosslinks in collagens and elastin. A highly conserved amino acid sequence at the C-terminus end appears to be sufficient for amine oxidase activity, suggesting that each family member may retain this function. The N-terminus is poorly conserved and may impart additional roles in developmental regulation, senescence, tumor suppression, cell growth control, and chemotaxis to each member of the family. Alternatively spliced transcript variants of this gene have been reported but their full-length nature has not been determined.

**Synonyms:**

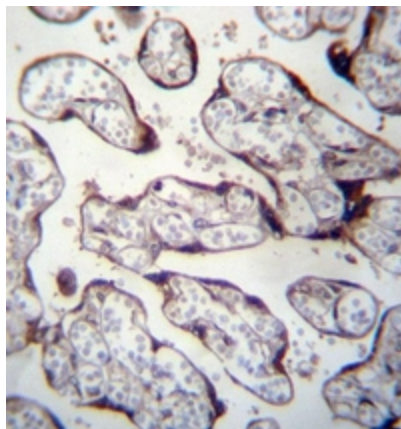
LOXL, Lysyl oxidase homolog 3, Lysyl oxidase-like protein 3

**Protein Families:**

Druggable Genome

**Product images:**


Western blot analysis of LOXL3 Antibody (C-term) in NCI-H292 cell line lysates (35ug/lane). This demonstrates the LOXL3 antibody detected the LOXL3 protein (arrow).



Immunohistochemistry analysis in formalin fixed and paraffin embedded human placenta tissue reacted with LOXL3 Antibody (C-term) followed by peroxidase conjugation of the secondary antibody and DAB staining.