

Product datasheet for **AP52513PU-N**

LOX (Center) Rabbit Polyclonal Antibody

Product data:

Product Type:	Primary Antibodies
Applications:	FC, WB
Recommended Dilution:	ELISA: 1/1000. Western Blot: 1/100-1/500. Flow Cytometry: 1/10-1/50.
Reactivity:	Human
Host:	Rabbit
Isotype:	Ig
Clonality:	Polyclonal
Immunogen:	KLH conjugated synthetic peptide between 234~260 amino acids from the Center region of human Lysyl oxidase
Specificity:	This antibody recognizes Human Lysyl oxidase (Center).
Formulation:	PBS containing 0.09% (W/V) Sodium Azide as preservative State: Aff - Purified State: Liquid purified Ig fraction
Concentration:	lot specific
Purification:	Protein A column, followed by peptide affinity purification
Conjugation:	Unconjugated
Storage:	Store undiluted at 2-8°C for one month or (in aliquots) at -20°C for longer. Avoid repeated freezing and thawing.
Stability:	Shelf life: one year from despatch.
Gene Name:	lysyl oxidase
Database Link:	Entrez Gene 4015 Human P28300
Background:	LOX is an extracellular copper enzyme that initiates the crosslinking of collagens and elastin. The enzyme catalyzes oxidative deamination of the epsilon-amino group in certain lysine and hydroxylysine residues of collagens and lysine residues of elastin. In addition to crosslinking extracellular matrix proteins, the encoded protein may have a role in tumor suppression.



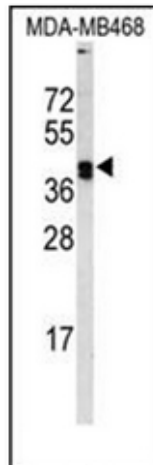
[View online »](#)

Synonyms: LOX, Protein-lysine 6-oxidase, EC=1.4.3.13

Note: **Molecular Weight:** 46944 Da

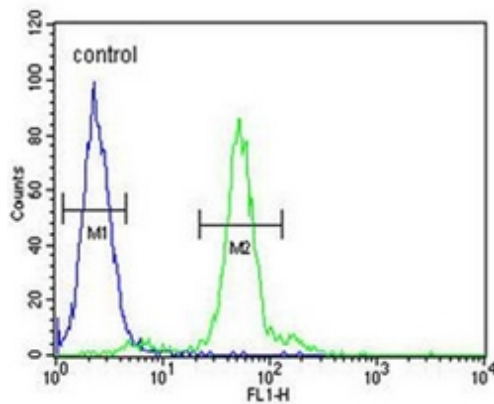
Protein Families: Druggable Genome, Secreted Protein

Product images:



Western blot analysis of Lysyl oxidase Antibody (Center) in MDA-MB468 cell line lysates (35ug/lane). LOX (arrow) was detected using the purified Pab.

293



Flow cytometric analysis of 293 cells using Lysyl oxidase Antibody (Center) (right histogram) compared to a negative control cell (left histogram). FITC-conjugated goat-anti-rabbit secondary antibodies were used for the analysis.