

Product datasheet for **AP52512PU-N**

LONP2 (N-term) Rabbit Polyclonal Antibody

Product data:

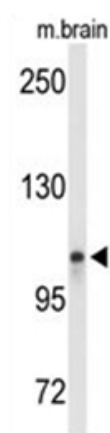
Product Type:	Primary Antibodies
Applications:	WB
Recommended Dilution:	ELISA: 1/1000. Western Blot: 1/100-1/500.
Reactivity:	Human, Mouse
Host:	Rabbit
Isotype:	Ig
Clonality:	Polyclonal
Immunogen:	KLH conjugated synthetic peptide between 111~140 amino acids from the N-terminal region of human LONP2
Specificity:	This antibody recognizes Human and Mouse LONP2 (N-term).
Formulation:	PBS containing 0.09% (W/V) Sodium Azide as preservative State: Aff - Purified State: Liquid purified Ig fraction
Concentration:	lot specific
Purification:	Protein A column, followed by peptide affinity purification
Conjugation:	Unconjugated
Storage:	Store undiluted at 2-8°C for one month or (in aliquots) at -20°C for longer. Avoid repeated freezing and thawing.
Stability:	Shelf life: one year from despatch.
Gene Name:	lon peptidase 2, peroxisomal
Database Link:	Entrez Gene 66887 Mouse Entrez Gene 83752 Human Q86WA8
Background:	LONP2 is probable serine protease which may be involved in peroxisome biogenesis (By similarity).
Synonyms:	LONP, Lon protease 2, Peroxisomal Lon protease
Note:	Molecular Weight: 94617 Da



[View online »](#)

Protein Families: Druggable Genome, Protease

Product images:



Western blot analysis of LONP2 Antibody (N-term) in mouse brain tissue lysates (35ug/lane). LONP2 (arrow) was detected using the purified Pab.