

Product datasheet for **AP52510PU-N**

Leucyl cystinyl aminopeptidase (LNPEP) (N-term) Rabbit Polyclonal Antibody

Product data:

Product Type:	Primary Antibodies
Applications:	FC, IHC, WB
Recommended Dilution:	ELISA: 1/1000 Western Blot: 1/100-1/500. Flow Cytometry: 1/10-1/50. Immunohistochemistry on Paraffin Sections: 1/50-1/100.
Reactivity:	Human
Host:	Rabbit
Isotype:	Ig
Clonality:	Polyclonal
Immunogen:	KLH conjugated synthetic peptide between 16-46 amino acids from the N-terminal region of Human LNPEP.
Specificity:	This antibody recognizes Human LNPEP (N-Term).
Formulation:	PBS State: Aff - Purified State: Liquid purified Ig fraction Preservative: 0.09% Sodium Azide
Concentration:	lot specific
Purification:	Affinity Chromatography on Protein A
Conjugation:	Unconjugated
Storage:	Store undiluted at 2-8°C for one month or (in aliquots) at -20°C for longer. Avoid repeated freezing and thawing.
Stability:	Shelf life: one year from despatch.
Gene Name:	leucyl/cystinyl aminopeptidase
Database Link:	Entrez Gene 4012 Human Q9UIQ6



[View online »](#)

Background:

This gene encodes a zinc-dependent aminopeptidase that cleaves vasopressin, oxytocin, lys-bradykinin, met-enkephalin, dynorphin A and other peptide hormones. The protein can be secreted in maternal serum, reside in intracellular vesicles with the insulin-responsive glucose transporter GLUT4, or form a type II integral membrane glycoprotein. The protein catalyzes the final step in the conversion of angiotensinogen to angiotensin IV (AT4) and is also a receptor for AT4. Alternative splicing results in multiple transcript variants encoding different isoforms. [provided by RefSeq].

Synonyms:

LNPEP, OTASE, Leucyl-cystinyl aminopeptidase, Cystinyl aminopeptidase, EC=3.4.11.3, Oxytocinase, Insulin-responsive aminopeptidase, IRAP, Placental leucine aminopeptidase, P-LAP

Note:

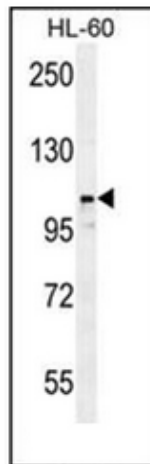
Molecular Weight: 117349 Da

Protein Families:

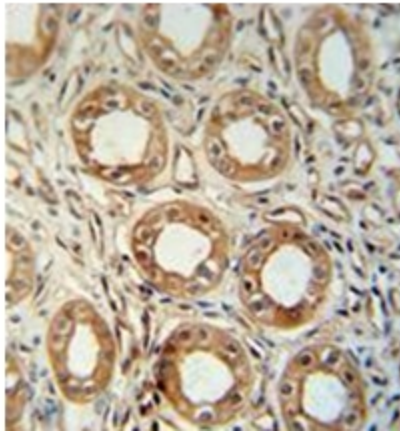
Druggable Genome, Protease, Secreted Protein, Transmembrane

Protein Pathways:

Renin-angiotensin system

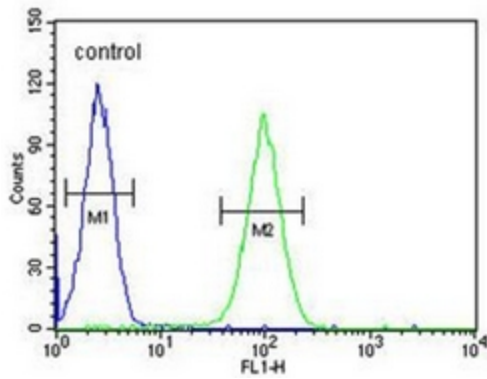
Product images:

Western blot analysis of LNPEP Antibody (N-Term) in HL-60 cell line lysates (35ug/lane). This demonstrates the LNPEP antibody detected the LNPEP protein (arrow).



Formalin fixed, paraffin embedded Human kidney tissue stained with LNPEP Antibody (N-Term) followed by peroxidase conjugation of the secondary antibody and DAB staining.

HL-60



Flow cytometric analysis of HL-60 cells using LNPEP Antibody (N-Term) (right histogram) compared to a negative control cell (left histogram). FITC-conjugated Goat anti Rabbit secondary antibodies were used for the analysis.