

## Product datasheet for **AP52509PU-N**

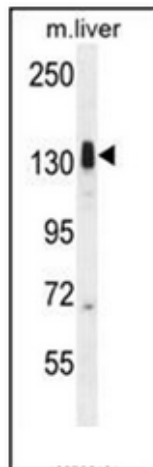
### LMTK3 (N-term) Rabbit Polyclonal Antibody

#### Product data:

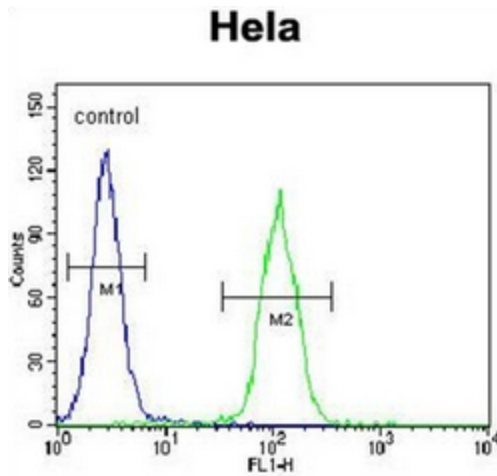
Product Type:	Primary Antibodies
Applications:	FC, WB
Recommended Dilution:	<b>ELISA:</b> 1/1000. <b>Western Blot:</b> 1/100-1/500. <b>Flow Cytometry:</b> 1/10-1/50.
Reactivity:	Human, Mouse
Host:	Rabbit
Isotype:	Ig
Clonality:	Polyclonal
Immunogen:	KLH conjugated synthetic peptide between 320-350 amino acids from the N-terminal region of human LMTK3
Specificity:	This antibody recognizes Human and Mouse LMTK3 (N-term).
Formulation:	PBS containing 0.09% (W/V) Sodium Azide as preservative State: Aff - Purified State: Liquid purified Ig fraction
Concentration:	lot specific
Purification:	Protein A column, followed by peptide affinity purification
Conjugation:	Unconjugated
Storage:	Store undiluted at 2-8°C for one month or (in aliquots) at -20°C for longer. Avoid repeated freezing and thawing.
Stability:	Shelf life: one year from despatch.
Gene Name:	lemur tyrosine kinase 3
Database Link:	<a href="#">Entrez Gene 114783 Human Q96Q04</a>
Synonyms:	LMTK-3, KIAA1883, TYKLM3, Serine/threonine-protein kinase LMTK3, EC=2.7.11.1, Lemur tyrosine kinase 3
Note:	<b>Molecular Weight:</b> 153;661 Da



[View online »](#)

**Product images:**

Western blot analysis of LMTK3 Antibody (N-term) in mouse liver tissue lysates (35ug/lane). This demonstrates the LMTK3 antibody detected the LMTK3 protein (arrow).



Flow cytometric analysis of HeLa cells using LMTK3 Antibody (N-term) (right histogram) compared to a negative control cell (left histogram). FITC-conjugated goat-anti-rabbit secondary antibodies were used for the analysis.