

Product datasheet for **AP52508PU-N**

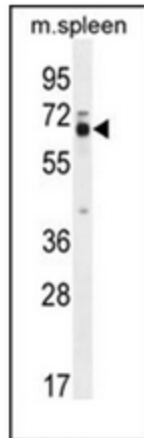
LMOD2 (N-term) Rabbit Polyclonal Antibody

Product data:

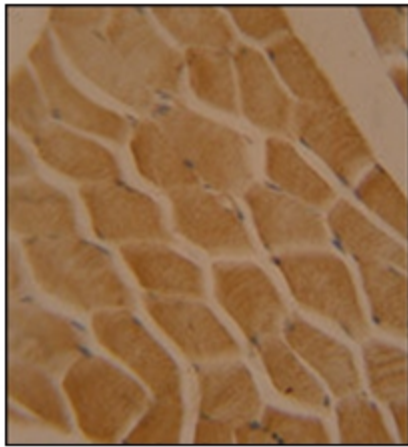
Product Type:	Primary Antibodies
Applications:	IHC, WB
Recommended Dilution:	ELISA: 1/1000. Western Blot: 1/100-1/500. Immunohistochemistry on Paraffin Sections: 1/50-1/100.
Reactivity:	Human, Mouse
Host:	Rabbit
Isotype:	Ig
Clonality:	Polyclonal
Immunogen:	KLH conjugated synthetic peptide between 67-96 amino acids from the N-terminal region of human LMOD2
Specificity:	This antibody recognizes Human and Mouse LMOD2 (N-term).
Formulation:	PBS containing 0.09% (W/V) Sodium Azide as preservative State: Aff - Purified State: Liquid purified Ig fraction
Concentration:	lot specific
Purification:	Protein A column, followed by peptide affinity purification
Conjugation:	Unconjugated
Storage:	Store undiluted at 2-8°C for one month or (in aliquots) at -20°C for longer. Avoid repeated freezing and thawing.
Stability:	Shelf life: one year from despatch.
Gene Name:	leiomodin 2
Database Link:	Entrez Gene 442721 Human Q6P5Q4
Synonyms:	Leiomodin-2
Note:	Molecular Weight: 61675 Da



[View online »](#)

Product images:

Western blot analysis of LMOD2 Antibody (N-term) in mouse spleen tissue lysates (35ug/lane). This demonstrates the LMOD2 antibody detected the LMOD2 protein (arrow).



Immunohistochemistry analysis in formalin fixed and paraffin embedded human skeletal muscle reacted with LMOD2 Antibody (N-term), which was peroxidase conjugated to the secondary antibody and followed by DAB staining. This data demonstrates the use of the LMOD2 antibody (N-term) for immunohistochemistry. Clinical relevance has not been evaluated.