

Product datasheet for **AP52505PU-N**

LMBR1L (C-term) Rabbit Polyclonal Antibody

Product data:

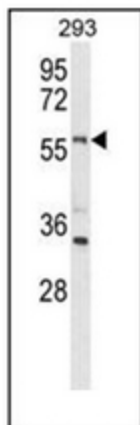
Product Type:	Primary Antibodies
Applications:	FC, IHC, WB
Recommended Dilution:	ELISA: 1/1000. Western Blot: 1/100-1/500. Flow Cytometry: 1/10-1/50. Immunohistochemistry on Paraffin Sections: 1/10-1/50.
Reactivity:	Human
Host:	Rabbit
Isotype:	Ig
Clonality:	Polyclonal
Immunogen:	KLH conjugated synthetic peptide between 460~489 amino acids from the C-terminal region of human LMBR1L
Specificity:	This antibody recognizes Human LMBR1L (C-term).
Formulation:	PBS containing 0.09% (W/V) Sodium Azide as preservative State: Aff - Purified State: Liquid purified Ig fraction
Concentration:	lot specific
Purification:	Protein A column, followed by peptide affinity purification
Conjugation:	Unconjugated
Storage:	Store undiluted at 2-8°C for one month or (in aliquots) at -20°C for longer. Avoid repeated freezing and thawing.
Stability:	Shelf life: one year from despatch.
Gene Name:	limb development membrane protein 1 like
Database Link:	Entrez Gene 55716 Human Q6UX01
Synonyms:	LMBR1L, KIAA1174, LIMR
Note:	Molecular Weight: 55209 Da



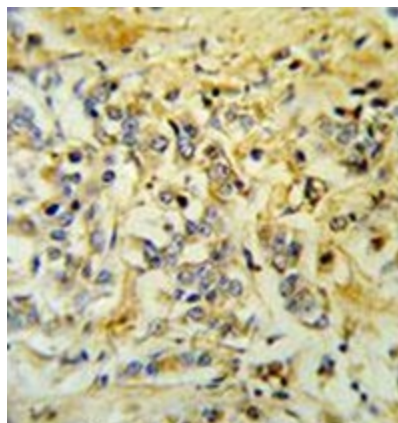
[View online »](#)

Protein Families: Druggable Genome, Transmembrane

Product images:

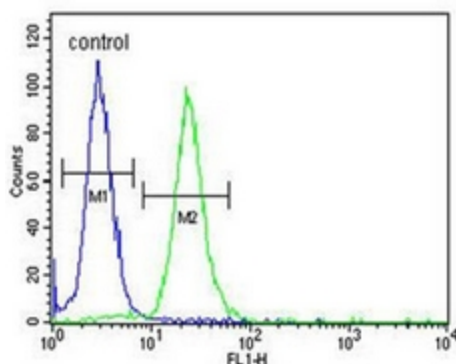


Western blot analysis of LMBR1L Antibody (C-term) in 293 cell line lysates (35ug/lane). LMBR1L (arrow) was detected using the purified Pab.



Immunohistochemistry analysis in formalin fixed and paraffin embedded breast carcinoma reacted with LMBR1L Antibody (C-term), which was peroxidase conjugated to the secondary antibody and followed by DAB staining.

293



Flow cytometric analysis of 293 cells using LMBR1L Antibody (C-term) (right histogram) compared to a negative control cell (left histogram). FITC-conjugated goat-anti-rabbit secondary antibodies were used for the analysis.