

Product datasheet for **AP52503PU-N**

LMAN2 (C-term) Rabbit Polyclonal Antibody

Product data:

Product Type:	Primary Antibodies
Applications:	WB
Recommended Dilution:	ELISA: 1/1000. Western Blot: 1/100-1/500.
Reactivity:	Human
Host:	Rabbit
Isotype:	Ig
Clonality:	Polyclonal
Immunogen:	KLH conjugated synthetic peptide between 284-314 amino acids from the C-terminal region of Human LMAN2
Specificity:	This antibody recognizes Human LMAN2 (C-term).
Formulation:	PBS containing 0.09% (W/V) Sodium Azide as preservative State: Aff - Purified State: Liquid purified Ig fraction
Concentration:	lot specific
Purification:	Protein A column, followed by peptide affinity purification
Conjugation:	Unconjugated
Storage:	Store undiluted at 2-8°C for one month or (in aliquots) at -20°C for longer. Avoid repeated freezing and thawing.
Stability:	Shelf life: one year from despatch.
Gene Name:	lectin, mannose binding 2
Database Link:	Entrez Gene 10960 Human Q12907
Background:	LMAN2 is a type I transmembrane lectin that shuttles between the endoplasmic reticulum, the Golgi apparatus and the plasma membrane. The encoded protein binds high mannose type glycoproteins and may facilitate their sorting, trafficking and quality control.
Synonyms:	LMAN2, C5orf8, Vesicular integral-membrane protein VIP36, Lectin mannose-binding 2, Glycoprotein GP36b

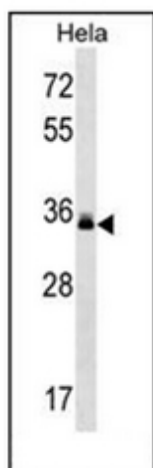


[View online »](#)

Note: **Molecular Weight:** 40229 Da

Protein Families: Transmembrane

Product images:



Western blot analysis of LMAN2 Antibody (C-term) in HeLa cell line lysates (35ug/lane). This demonstrates the LMAN2 antibody detected the LMAN2 protein (arrow).