

Product datasheet for **AP52502PU-N**

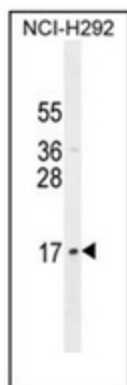
LLPH (Center) Rabbit Polyclonal Antibody

Product data:

| | |
|-----------------------|--|
| Product Type: | Primary Antibodies |
| Applications: | WB |
| Recommended Dilution: | ELISA: 1/1000. Western Blot: 1/100-1/500. |
| Reactivity: | Human |
| Host: | Rabbit |
| Isotype: | Ig |
| Clonality: | Polyclonal |
| Immunogen: | KLH conjugated synthetic peptide between 65-94 amino acids from the Central region of human LLPH |
| Specificity: | This antibody recognizes Human LLPH (Center). |
| Formulation: | PBS containing 0.09% (W/V) Sodium Azide as preservative State: Aff - Purified State: Liquid purified Ig fraction |
| Concentration: | lot specific |
| Purification: | Protein A column, followed by peptide affinity purification |
| Conjugation: | Unconjugated |
| Storage: | Store undiluted at 2-8°C for one month or (in aliquots) at -20°C for longer. Avoid repeated freezing and thawing. |
| Stability: | Shelf life: one year from despatch. |
| Gene Name: | LLP homolog, long-term synaptic facilitation |
| Database Link: | Entrez Gene 84298 Human Q9BRT6 |
| Synonyms: | Protein LLP homolog,C12orf31 |
| Note: | Molecular Weight: 15225 Da |



[View online »](#)

Product images:

Western blot analysis of LLPH Antibody (Center) in NCI-H292 cell line lysates (35ug/lane). This demonstrates the LLPH antibody detected the LLPH protein (arrow).