

## Product datasheet for **AP52501PU-N**

### **LIX1L (Center) Rabbit Polyclonal Antibody**

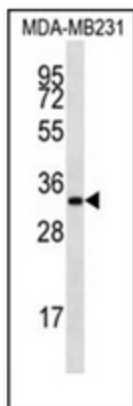
#### **Product data:**

Product Type:	Primary Antibodies
Applications:	WB
Recommended Dilution:	<b>ELISA:</b> 1/1000. <b>Western Blot:</b> 1/100-1/500.
Reactivity:	Human, Mouse
Host:	Rabbit
Isotype:	Ig
Clonality:	Polyclonal
Immunogen:	KLH conjugated synthetic peptide between 159-189 amino acids from the Central region of human LIX1L
Specificity:	This antibody recognizes Human and Mouse LIX1L (Center).
Formulation:	PBS containing 0.09% (W/V) Sodium Azide as preservative State: Aff - Purified State: Liquid purified Ig fraction
Concentration:	lot specific
Purification:	Protein A column, followed by peptide affinity purification
Conjugation:	Unconjugated
Storage:	Store undiluted at 2-8°C for one month or (in aliquots) at -20°C for longer. Avoid repeated freezing and thawing.
Stability:	Shelf life: one year from despatch.
Gene Name:	limb and CNS expressed 1 like
Database Link:	<a href="#">Entrez Gene 280411 Mouse</a> <a href="#">Entrez Gene 128077 Human</a> <a href="#">Q8IVB5</a>
Synonyms:	LIX1-like protein
Note:	<b>Molecular Weight:</b> 36563 Da

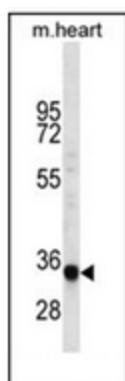


[View online »](#)

## Product images:



Western blot analysis of LIX1L Antibody (Center) in MDA-MB231 cell line lysates (35ug/lane). This demonstrates the LIX1L antibody detected the LIX1L protein (arrow).



Western blot analysis of LIX1L Antibody (Center) in mouse heart tissue lysates (35ug/lane). This demonstrates the LIX1L antibody detected the LIX1L protein (arrow).