

Product datasheet for **AP52500PU-N**

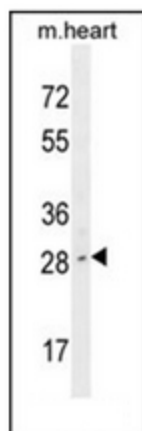
LIX1 (C-term) Rabbit Polyclonal Antibody

Product data:

Product Type:	Primary Antibodies
Applications:	WB
Recommended Dilution:	ELISA: 1/1000. Western Blot: 1/100-1/500.
Reactivity:	Human, Mouse
Host:	Rabbit
Isotype:	Ig
Clonality:	Polyclonal
Immunogen:	KLH conjugated synthetic peptide between 224-254 amino acids from the C-terminal region of human LIX1
Specificity:	This antibody recognizes Human and Mouse LIX1 (C-term).
Formulation:	PBS containing 0.09% (W/V) Sodium Azide as preservative State: Aff - Purified State: Liquid purified Ig fraction
Concentration:	lot specific
Purification:	Protein A column, followed by peptide affinity purification
Conjugation:	Unconjugated
Storage:	Store undiluted at 2-8°C for one month or (in aliquots) at -20°C for longer. Avoid repeated freezing and thawing.
Stability:	Shelf life: one year from despatch.
Gene Name:	limb and CNS expressed 1
Database Link:	Entrez Gene 66643 Mouse Entrez Gene 167410 Human Q8N485
Synonyms:	Protein limb expression 1 homolog, C5orf11
Note:	Molecular Weight: 31891 Da



[View online »](#)

Product images:

Western blot analysis of LIX1 Antibody (C-term) in mouse heart tissue lysates (35ug/lane). This demonstrates the LIX1 antibody detected the LIX1 protein (arrow).