

Product datasheet for **AP52498PU-N**

LIPM (C-term) Rabbit Polyclonal Antibody

Product data:

Product Type:	Primary Antibodies
Applications:	IHC, WB
Recommended Dilution:	ELISA: 1/1000. Western Blot: 1/100-1/500. Immunohistochemistry on Paraffin Sections: 1/10-1/50.
Reactivity:	Human
Host:	Rabbit
Isotype:	Ig
Clonality:	Polyclonal
Immunogen:	KLH conjugated synthetic peptide between 317-346 amino acids from the C-terminal region of Human LIPM
Specificity:	This antibody recognizes Human LIPM (C-term).
Formulation:	PBS containing 0.09% (W/V) Sodium Azide as preservative State: Aff - Purified State: Liquid purified Ig fraction
Concentration:	lot specific
Purification:	Protein A column, followed by peptide affinity purification
Conjugation:	Unconjugated
Storage:	Store undiluted at 2-8°C for one month or (in aliquots) at -20°C for longer. Avoid repeated freezing and thawing.
Stability:	Shelf life: one year from despatch.
Gene Name:	lipase family member M
Database Link:	Entrez Gene 340654 Human Q5VYY2
Background:	LIPM plays a highly specific role in the last step of keratinocyte differentiation. May have an essential function in lipid metabolism of the most differentiated epidermal layers.
Synonyms:	Lipase member M,LIPL3

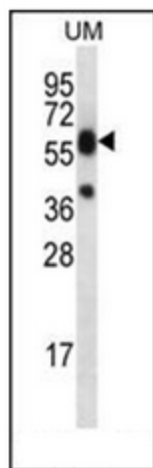


[View online »](#)

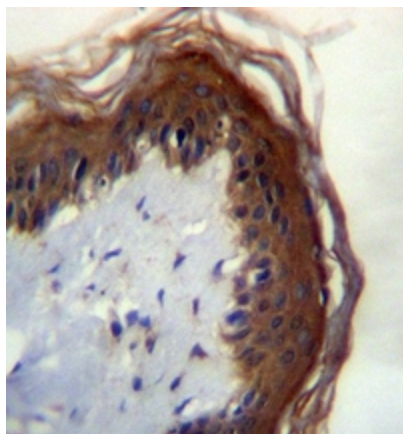
Note: **Molecular Weight:** 48233 Da

Protein Families: Druggable Genome

Product images:



Western blot analysis of LIPM Antibody (C-term) in UM cell line lysates (35ug/lane). This demonstrates the LIPM antibody detected the LIPM protein (arrow).



Immunohistochemistry analysis in formalin fixed and paraffin embedded human skin tissue reacted with LIPM Antibody (C-term) followed by peroxidase conjugation of the secondary antibody and DAB staining.