

## Product datasheet for **AP52497PU-N**

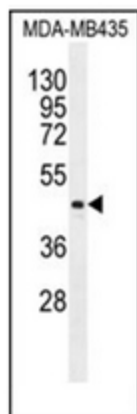
### LIPK (C-term) Rabbit Polyclonal Antibody

#### Product data:

Product Type:	Primary Antibodies
Applications:	WB
Recommended Dilution:	<b>ELISA:</b> 1/1000. <b>Western Blot:</b> 1/100-1/500.
Reactivity:	Human
Host:	Rabbit
Isotype:	Ig
Clonality:	Polyclonal
Immunogen:	KLH conjugated synthetic peptide between 366-396 amino acids from the C-terminal region of human LIPK.
Specificity:	This antibody recognizes Human LIPK (C-term).
Formulation:	PBS containing 0.09% (W/V) Sodium Azide as preservative State: Aff - Purified State: Liquid purified Ig fraction
Concentration:	lot specific
Purification:	Protein A column, followed by peptide affinity purification
Conjugation:	Unconjugated
Storage:	Store undiluted at 2-8°C for one month or (in aliquots) at -20°C for longer. Avoid repeated freezing and thawing.
Stability:	Shelf life: one year from despatch.
Gene Name:	lipase family member K
Database Link:	<a href="#">Entrez Gene 643414 Human Q5VXJ0</a>
Background:	LIPK plays a highly specific role in the last step of keratinocyte differentiation. May have an essential function in lipid metabolism of the most differentiated epidermal layers.
Synonyms:	LIPL2, Lipase-like abhydrolase domain-containing protein 2
Note:	<b>Molecular Weight:</b> 45563 Da



[View online »](#)

**Product images:**

Western blot analysis of LIPK Antibody (C-term) in MDA-MB435 cell line lysates (35ug/lane). This demonstrates the LIPK antibody detected the LIPK protein (arrow).